



## Effect of *H. pylori* among Diabetic Patients Living in Khartoum State, Sudan

Nahla Mohammed Alias <sup>a\*</sup> and Mubarak Saeed Mustafa Elkarsany <sup>a</sup>

<sup>a</sup> Department of Hematology, Faculty of Medical Laboratory Sciences, Karary University, Khartoum, Sudan.

### Authors' contributions

This work was carried out in collaboration between both authors. Both authors read and approved the final manuscript.

### Article Information

DOI: 10.9734/IBRR/2022/v13i330175

### Open Peer Review History:

This journal follows the Advanced Open Peer Review policy. Identity of the Reviewers, Editor(s) and additional Reviewers, peer review comments, different versions of the manuscript, comments of the editors, etc are available here: <https://www.sdiarticle5.com/review-history/85858>

Original Research Article

Received 27 January 2022  
Accepted 07 April 2022  
Published 15 April 2022

### ABSTRACT

**Background:** Studies suggest an association between *Helicobacter pylori* (*H. pylori*) infection and extra gastrointestinal disease. Limited studies provided conflicting results on the association between *H. pylori* infection and diabetes. The present study was aimed at examining the association between *H. pylori* infection and diabetes among Sudanese patients.

**Methods:** This was case control study conducted among Sudanese diabetic patients during the period from May 2018 to July 2021. A total of 181 diabetics patients are involved in this study. Blood, stool samples were collected from each participant. All stool samples were tested for the presence of *H. pylori* antigen by using commercially available *H. pylori* antigen detection card. Based on the result examination for *H. pylori* the study population are sub grouped in two groups one group 124 of cases with Positive *H. pylori* antigen and another group 57 of controls with negative *H. pylori* infection. Both groups were assessed for the level of fasting blood glucose. Data was gathered and analyzed by using SPSS version 20.

**Results:** among cases group the mean of fasting blood glucose was 201.94± 90.45 mg/dl compared to 199.40± 97.83 mg/dl among control group. The statistical analysis was showed insignificant difference between cases and controls in the level of fasting blood glucose with P-value of 0.864 . In addition, among cases group the mean of male's blood glucose 213.0±91.52 mg/dl was higher than females blood glucose level 185.0 ±87.0 mg/dl.

**Conclusion:** They were insignificant association between blood glucose level and *H. pylori* infection among diabetes patents, However, the subgroup analysis suggested that *H. pylori*

\*Corresponding author: E-mail: nahlaalyas1991@gmail.com;

infection was possibly associated with increased risk of diabetes among males. Future cohort studies are needed to verify this association in females and to address possible implication in the prevention of diabetes.

**Keywords:** Diabetes millets; *H.pylori* infection; blood glucose level.

## 1. INTRODUCTION

“The most common infection within the world, particularly in developing countries, is *Helicobacter pylori* (*H. pylori*) infection that is associate in etiological issue for developing ulcer, internal organ cancer, and acute polymorphonuclear infiltration within the internal organ tissue layer” [1,2]. “The mononuclear infiltration is characterized by the local production and systemic diffusion of proinflammatory cytokines affecting remote tissues and organic systems” [3,4]. “This systemic inflammation causes some extra-gastrointestinal side effects of *H. pylori*. including ischemic heart disease” [1], sideropenic anemia [5], “idiopathic thrombocytopenic purpura [6], neurologic diseases [7], and hepatobiliary diseases” [8].

“It has been shown that *H. pylori* infection plays a role in some endocrine disorders, such as autoimmune thyroid diseases, diabetes, and primary hyperparathyroidism and may have a high prevalence among patients with diabetes” [9,10]. “The association between *H. pylori* and diabetes was first explored in Simon et al.’s study” [11]. “Recently, a meta-analysis [12] showed *H. pylori* infection was increased to 1.33 among patients with diabetes. In addition, some studies have shown an increased incidence of diabetes among people with *H. pylori* infection so that the first report that *H. pylori* infection increased incidence of diabetes was in a study by Jeon et al. [13] using a prospective cohort of 782 Latino individuals >60 years of age”.

“Etiopathogenesis of *H. pylori* infection in diabetic patients has not been defined clearly. However, this hypothesis is now proposed that *H. pylori* infection is more prevalent among people with diabetes but it is not clear whether diabetics have more susceptibility to this infection or *H. pylori* infection increases the susceptibility to diabetes. One of the hypotheses about *H. pylori* infection as a risk factor for diabetes is increased insulin resistance in these patients” [13],

“As insulin resistance will develop within the presence of inflammation or as a result of alterations in counter regulative hormones that

have an effect on hormone, *H. pylori* might therefore promote hormone resistance by causation chronic inflammation and moving insulin-regulating epithelial duct hormones” [14]. “The first direct evidence for an association between chronic *H. pylori* infection and insulin resistance rose from Aydemir et al.’s study” [15] “showing higher homeostatic model assessment-estimated insulin resistance (HOMA-IR) scores in *H. pylori* positive individuals. In contrast, some studies have not shown this association” [16].

Regarding these conflicting findings and the fact that proving a causal role between *H. pylori* infection and insulin resistance increase has important role in controlling the important and common diseases such as diabetes and nonalcoholic fatty liver, we aimed to evaluate the association between *H. pylori* infection and Glucose level in type 2 diabetic patients.

## 2. MATERIALS AND METHODS

### 2.1 Study Setting and Population

This was case control study conducted among Sudanese diabetic patients during the period from May 2018 to July 2021. A total of 181 diabetics patients are involved in this study, the sample size was determined based on previous studies. Blood and stool samples were collected from each participant. All stool samples were tested for the presence of *H. pylori* antigen by using commercially available *H. pylori* antigen detection card. Based on the result examination for *H. pylori* the study population are sub grouped in two groups one group 124 of cases with Positive *H. pylori* antigen and another group 57 of controls with negative *H. pylori* infection. Both groups were assessed for the level of fasting blood glucose.

### 2.2 Inclusion and Exclusion Criteria

Confirmed Sudanese diabetic patients living in Khartoum state of various ages and genders were included in this study. Any patient with disease other than diabetes mellites were excluded from this study.

### 2.3 Detection of *H. pylori* Antigen in Stool Sample

The stool samples were evaluated by the card test according to the manufacturer's protocol. A single red band appearing across the central window in the site marked with the control line was considered negative. A red band appearing in the site marked with the result line and in the site marked with the control line was considered positive. A total absence of the control band, regardless of the appearance of the result site was considered invalid.

### 2.4 Estimation of Blood Glucose by Enzymatic Method

Blood glucose concentration was measured using routine enzymatic method. Kits was provided from Biosystem Company, glucose is oxides by POD to gluconic acid and hydrogen peroxide, reacts with choro-4phenol and PAP to form a red quinonimine the absorbance proportional to the concentration of glucose in sample by spectrophotometer (520nm). Reference range was 70-110 mg/dl.

### 2.5 Quality Control

Pathological and normal control sera were used to assure the accuracy of the result.

### 2.6 Data Collection and Analysis

The cases and controls demographic data was recorded by using questionnaire. Laboratory test data including participants blood glucose level and stool for *H. pylori* test results were also obtained and recorded.

### 2.7 Data Analysis

Data was analyzed by using computer software package for social science (SPSS) version 20. Independent T test was used to compare between cases and controls in the level of blood

glucose. The probability value  $<0.05$  was considered to indicate a statistically significant value.

## 3. RESULTS

### 3.1 Participant Description

This study was involved a total of 181 participants, about one third of them 58 (32.0% ) are aged 53 – 63 years, while only 6 (3.3%) of them are aged less than 20 years old (Table 1). More than half 103 (56.9%) of the study participants are males while he rests 78 (43.1%) are females (Table 2).

### 3.2 *H. pylori* Test Results

Results showed that 49 female and 75 males are positive for *H. pylori* while 29 females and 28 males are negative. There was insignificant correlation between the gender and *H. pylori* test result with P-value of 0.102 (Table 3).

### 3.3 Blood Glucose Test Results

Our results found that among cases group the mean of fasting blood glucose was  $201.94 \pm 90.45$  mg/dl compared to  $199.40 \pm 97.83$  mg/dl among control group. The statistical analysis was showed insignificant difference between cases and controls in the level of fasting blood glucose with P-value of 0.864 (Table 4). The results showed that there was insignificant correlation between participants age group and the result of *H. pylori* test (Figure1). Our study results showed that among cases group the mean of male's blood glucose  $213.0 \pm 91.52$  mg/dl was higher than females blood glucose level  $185.0 \pm 87.0$  mg/dl. While among control group the mean of male's blood glucose  $188.8 \pm 99.7$  mg/dl was lower than females blood glucose level  $209.5 \pm 96.6$  mg/dl (Table 5). The current study results showed that there were insignificant association between cases and controls age groups and the level of blood glucose (Tables 6,7).

**Table 1. Distributions of study populations according to their ages (age groups)**

Age group/years	Frequency	Percent%
less than 20 years	6	3.3
20-30	10	5.5
31-41	22	12.2
42-52	47	26.0
53-63	58	32.0
64-74	31	17.1
75-85	7	3.9
Total	181	100.0

**Table 2. Distributions of study populations according to their gender**

Gender	Frequency	Percent
Female	78	43.1
Male	103	56.9
Total	181	100.0

**Table 3. Correlation between Gender and H. pylori result**

Gender	H.pylori positive (N=124)	H.pylori negative (N=57)	Total
Female	49	29	78
Male	75	28	103
P.value	0.102		

**Table 4. The mean and Std of Glucose among study of case and control populations**

Parameter	Case (N=124) (mean ±Std)	Control (N=57) (mean ±Std)	P. value
Glucose	201.94± 90.45	199.40± 97.83	0.864

The table shows the mean ± SD (mini - max) and probability (P). Independent T-test was used for comparison. P value ≤ 0.05 was considered significant.

**Table 5. Cases and controls blood glucose level according to their gender**

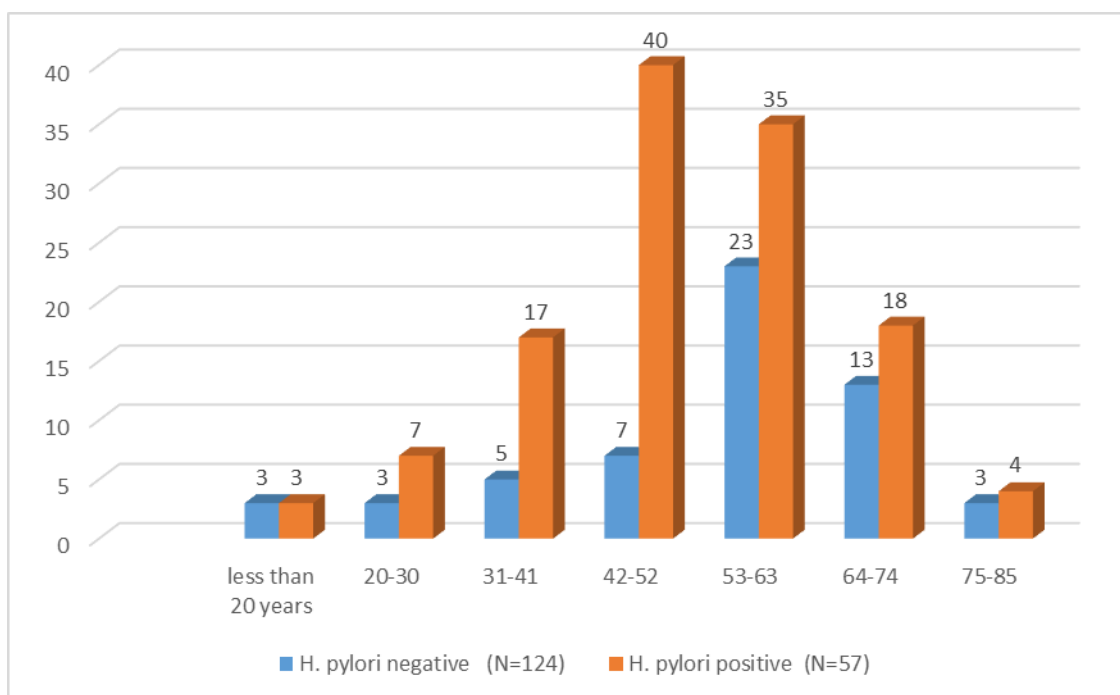
Participants	Gender	Glucose
Case	Female	185.0 ±87.0
	Male	213.0±91.52
Control	Female	209.5 ±96.6
	Male	188.8±99.7

**Table 6. Association between age group and Glucose among cases group**

Age group	Glucose
less than 20 years	166.6±57.73
20-30	159.4±56.38
31-41	205.0 ±119.5
42-52	235.7±99.3
53-63	195.4±77.8
64-74	147.9±42.6
75-85	252.0±34.1

**Table 7. Association between age group and Glucose, among control group**

Age group	Glucose
less than 20 years	354.0±125.5
20-30	200.6±30.5
31-41	247.0 ±141.4
42-52	214.8 ±134.2
53-63	180.4±67.5
64-74	174.9±90.9
75-85	179.3±80.2



**Fig. 1. Correlation between participants age groups and H. pylori test result**

#### 4. DISCUSSION

“Helicobacter pylori is a common infection in type 2 diabetics and these patients have colonization of helicobacter pylori in the gastric antrum. This is probably because of certain chemotactic factors like tumors necrosis factor (TNF), interleukins like IL1, IL2, IL8 which are present in the gastric epithelium which do not confer protective immunity against helicobacter pylori but cause a number of changes in the gastric epithelium that promote inflammation and epithelial damage” [17]. “The normal (helper T cell) TH1 cells boost cell mediated immunity to cancer and intracellular infection, TH2 cells seems more general and secretory immune response in mucosa. In helicobacter pylori infection TH1 cells predominate but TH2 cells are totally absent in Type 2 diabetic patients hence the helicobacter pylori infection is persistent”[18].

In the present study there was no significantly different between *H. pylori* and diabetes (P-value was 0.864), “this was disagreed with studies reported the link between *H. pylori* infection and diabetes remains controversial, as some studies indicate a higher prevalence of infection in diabetic patients” [19,20], while others report no difference [21,22,23]. “In other study which found relationship between *H. pylori* and diabetes mellitus was first explored in 1989 by Simon et

al” [24] who found that the prevalence of *H. pylori* infection in patients with diabetes mellitus was significantly higher than in asymptomatic controls.

“Additional supportive data have come from groups in the Netherlands” [28], Italy [29], and Africa [30]. Recently, a meta-analysis conducted by Zhou et al [31] “involved 14080 patients from 41 studies with a total *H. pylori* infection rate of 42.29%. The first demonstration that *H. pylori* infection leads to an increased incidence of diabetes was in a study by” Jeon et al [32] “using a prospective cohort of 782 Latino individuals > 60 years of age. In contrast, other studies have found no association between *H. pylori* infection and diabetes” [21,23,30,31]. “In a large, well-designed study by Xia et al” [31], “the seroprevalence of *H. pylori* infection was not significantly different in patients with diabetes mellitus compared to nondiabetic controls. Another agreement with study conducted in Nigeria, Oluyemi et al” [32] “found no significant difference in *H. pylori* prevalence between T2DM patients and controls. The discrepancies reported concerning the association of *H. pylori* and diabetes are likely due to inconsistencies in the methods used to define *H. pylori* positivity and diabetic status, the limited sample sizes, and adjustments for potential confounders such as age and socioeconomic status” [31].

“The relationship between *H. pylori* infection and diabetes remained controversial for the last years. Several studies supported our results on the lack of association between *H. pylori* infection and diabetes” [33,34,35]. “In contrast, others found *H. pylori* infection to be positively associated with diabetes” [36,37,38]. “A meta-analysis that included 41 case-control studies concluded that *H. pylori* infection could be a potential risk factor for type 2 diabetes, while among them, two studies conducted in China both showed a negative result” [39]. “Nevertheless, few of these previous studies had adjusted family history of diabetes in their analysis. Since there has been compelling evidence supporting the strong role of genetics in the development of diabetes” [40], the relationship between *H. pylori* infection and diabetes cannot be truly clarified without adjusting family history of diabetes.

## 5. CONCLUSION

From our findings we conclude that, there were insignificant association between Glucose and *H. pylori* infection. There were insignificant association between Glucose and gender among both cases and control. Patients with Positive *H. pylori* infection were treated with triple therapy of *H. pylori*. Larger prospective studies investigating the impact of *H. pylori* infection on diabetes and corresponding mediating factors are warranted. Long-term evaluation studies are urgently needed *Helicobacter pylori* eradication for prevention and progression of diabetes. Evidence supporting an etiological role of *H. pylori* in the development of T2DM would indicate that preventive measures, such as increased hygiene and treatments using antibiotics and proton pump inhibitor combinations, should be explored as targets of intervention in high-risk communities.

## CONSENT AND ETHICAL CONSECRATIONS

The study received approval from the ethics committee of Karary University, and was conducted in accordance with the Declaration of Helsinki. Informed consent was taken from each participant.

## AVAILABILITY OF DATA AND MATERIALS

The datasets used and/or analyzed during the current study are available from the corresponding author on reasonable request.

## COMPETING INTERESTS

Authors have declared that no competing interests exist.

## REFERENCES

1. Vafaeimanesh J, Hejazi SF, Damanpak V, Vahedian M, Sattari M, Seyyedmajidi M. Association of *Helicobacter pylori* infection with coronary artery disease: is *Helicobacter pylori* a risk factor?. *Scientific World Journal*. 2014;2014:516354. Published 2014 Jan 16. DOI:10.1155/2014/516354
2. Asaoka D, Nagahara A, Hojo M, et al. The Relationship between *H. pylori* Infection and Osteoporosis in Japan. *Gastroenterol Res Pract*. 2014;2014:340765. DOI:10.1155/2014/340765
3. Eisa, SA, Almehy GF, Eisa HA, Omar MZ, Essawy TS, and Abou Elnass AA. Study of the *Helicobacter pylori* infection in chronic obstructive pulmonary disease. *Egyptian Journal of Chest Diseases and Tuberculosis*. 2016; 65(3):567-571.
4. Kowal M, Sorokowski P, Żelaźniewicz A, Nowak J, Orzechowski S, Żurek A, and Żurek, G. A positive relationship between body height and the testosterone response to physical exercise. *Evolution and Human Behavior*. 2021;42(3):179-185.
5. Monzón H, Forné M, Esteve M, et al. *Helicobacter pylori* infection as a cause of iron deficiency anaemia of unknown origin. *World J Gastroenterol*. 2013;19(26):4166-4171. DOI:10.3748/wjg.v19.i26.4166
6. Payandeh M, Sohrabi N, Zare ME, Kansestani AN, Hashemian AH. Platelet Count Response to *Helicobacter pylori* Eradication in Iranian Patients with Idiopathic Thrombocytopenic Purpura. *Mediterr J Hematol Infect Dis*. 2012;4(1):e2012056. DOI:10.4084/MJHID.2012.056C.
7. Roubaud-Baudron C, Krolak-Salmon P, Quadrio I, Mégraud F, Salles N. Impact of chronic *Helicobacter pylori* infection on Alzheimer's disease: preliminary results. *Neurobiol Aging*. 2012;33(5):1009.e11-1009.e1.009E19. DOI:10.1016/j.neurobiolaging.2011.10.021.
8. Polyzos SA, Kountouras J, Papatheodorou A, et al. *Helicobacter pylori* infection in patients with nonalcoholic fatty liver disease. *Metabolism*. 2013;62(1):121-126.

- DOI:10.1016/j.metabol.2012.06.007.
9. Jafarzadeh A, Rezayati MT, Nemati M. Helicobacter pylori seropositivity in patients with type 2 diabetes mellitus in south-east of Iran. *Acta Med Iran.* 2013;51(12):892-896.
  10. Talebi-Taher M, Mashayekhi M, Hashemi MH, Bahrani V. Helicobacter pylori in diabetic and non-diabetic patients with dyspepsia. *Acta Med Iran.* 2012;50(5):315-318.
  11. Zhou X, Zhang C, Wu J, Zhang G. Association between Helicobacter pylori infection and diabetes mellitus: a meta-analysis of observational studies. *Diabetes Res Clin Pract.* 2013;99(2):200-208. doi:10.1016/j.diabres.2012.11.012
  12. Jeon CY, Haan MN, Cheng C, et al. Helicobacter pylori infection is associated with an increased rate of diabetes. *Diabetes Care.* 2012;35(3):520-525. DOI:10.2337/dc11-1043
  13. Malamug LR, Karnchanasorn R, Samoa R, Chiu KC. The Role of Helicobacter pylori Seropositivity in Insulin Sensitivity, Beta Cell Function, and Abnormal Glucose Tolerance. *Scientifica (Cairo).* 2014;2014:870165. DOI:10.1155/2014/870165
  14. American Diabetes Association. Diagnosis and classification of diabetes mellitus. *Diabetes Care.* 2014;37 Suppl 1:S81-S90. DOI:10.2337/dc14-S081
  15. Candelli M, Rigante D, Schiavino A, et al. High reinfection rate of Helicobacter pylori in young type 1 diabetic patients: a three-year follow-up study. *Eur Rev Med Pharmacol Sci.* 2012;16(11):1468-1472.
  16. Vafaeimanesh J, Parham M, Seyyedmajidi M, Bagherzadeh M. Helicobacter pylori infection and insulin resistance in diabetic and nondiabetic population. *Scientific World Journal.* 2014;2014:391250. DOI:10.1155/2014/391250.
  17. Buzás GM. Metabolic consequences of Helicobacter pylori infection and eradication. *World J Gastroenterol.* 2014;20(18):5226-5234. DOI:10.3748/wjg.v20.i18.5226
  18. Buzás GM. Metabolic consequences of Helicobacter pylori infection and eradication. *World J Gastroenterol.* 2014;20(18):5226-5234. DOI:10.3748/wjg.v20.i18.5226.
  19. Devrajani BR, Shah SZ, Soomro AA, Devrajani T. Type 2 diabetes mellitus: A risk factor for Helicobacter pylori infection: A hospital-based case-control study. *Int J Diabetes Dev Ctries.* 2010;30(1):22-26.
  20. Jafarzadeh A, Rezayati MT, Nemati M. Helicobacter pylori seropositivity in patients with type 2 diabetes mellitus in south-east of Iran. *Acta Med Iran.* 2013;51(12):892-896.
  21. Ayoola AE, Ageely HM, Gadour MO, Pathak VP. Prevalence of Helicobacter pylori infection among patients with dyspepsia in South-Western Saudi Arabia. *Saudi Med J.* 2004;25(10):1433-1438.
  22. He C, Yang Z, Lu NH. Helicobacter pylori infection and diabetes: is it a myth or fact? *World J Gastroenterol.* 2014;20(16):4607-4617. DOI:10.3748/wjg.v20.i16.4607.
  23. Alzahrani AM, Al Zaidi AA, Alzahrani SM, Binmahfouz SA, Farahat FM. Association between type 2 diabetes mellitus and *Helicobacter pylori* infection among Saudi patients attending National Guard Primary Health Care Centers in the Western Region, 2018. *J Family Community Med.* 2020;27(1):8-14. DOI:10.4103/jfcm.JFCM\_142\_19.
  24. Rayner CK, Talley NJ, Horowitz M. Stomach bugs and diabetes: an astounding observation or just confounding? *Diabetes Care.* 2012;35(3):463-464. DOI:10.2337/dc11-2470.
  25. El-Eshmawy MM, El-Hawary AK, Abdel Gawad SS, El-Baiomy AA. Helicobacter pylori infection might be responsible for the interconnection between type 1 diabetes and autoimmune thyroiditis. *Diabetol Metab Syndr.* 2011;3(1):28. Published 2011 Oct 26. DOI:10.1186/1758-5996-3-28.
  26. Li JZ, Li JY, Wu TF, et al. *Helicobacter pylori* Infection Is Associated with Type 2 Diabetes, Not Type 1 Diabetes: An Updated Meta-Analysis. *Gastroenterol Res Pract.* 2017;2017:5715403. doi:10.1155/2017/5715403.
  27. Longo-Mbenza B, Nsenga JN, Mokondjimobe E, et al. Helicobacter pylori infection is identified as a cardiovascular risk factor in Central Africans. *Vasc Health Risk Manag.* 2012;6:455-461. doi:10.2147/VHRM.S28680.
  28. Hsieh MC, Wang SS, Hsieh YT, Kuo FC, Soon MS, Wu DC. Helicobacter pylori infection associated with high HbA1c and

- type 2 diabetes. *Eur J Clin Invest.* 2013;43(9):949-956. doi:10.1111/eci.12124
29. Jeon CY, Haan MN, Cheng C, et al. Helicobacter pylori infection is associated with an increased rate of diabetes. *Diabetes Care.* 2012;35(3):520-525. DOI:10.2337/dc11-1043.
30. Chen S, de Craen AJ, Raz Y, et al. Cytomegalovirus seropositivity is associated with glucose regulation in the oldest old. Results from the Leiden 85-plus Study. *Immun Ageing.* 2012;9(1):18. Published 2012 Aug 28. DOI:10.1186/1742-4933-9-18.
31. Zojaji H, Atefi E, Sherafat SJ, Ghobakhlou M, Fatemi SR. The effect of the treatment of Helicobacter pylori infection on the glycemic control in type 2 diabetes mellitus. *Gastroenterol Hepatol Bed Bench.* 2013;6(1):36-40.
32. Oluyemi A, Anomneze E, Smith S, Fasanmade O. Prevalence of a marker of active helicobacter pylori infection among patients with type 2 diabetes mellitus in Lagos, Nigeria. *BMC Res Notes.* 2012;5:284. Published 2012 Jun 11. DOI:10.1186/1756-0500-5-284.
33. Wawro N, Amann U, Butt J, et al. *Helicobacter pylori* Seropositivity: Prevalence, Associations, and the Impact on Incident Metabolic Diseases/Risk Factors in the Population-Based KORA Study. *Front Public Health.* 2019;7:96. Published 2019 Apr 24. DOI:10.3389/fpubh.2019.00096.
34. Kouitcheu Mabeku LB, Noundjeu Ngamga ML, Leundji H. Helicobacter pylori infection, a risk factor for Type 2 diabetes mellitus: a hospital-based cross-sectional study among dyspeptic patients in Douala-Cameroon. *Sci Rep.* 2020;10(1):12141
35. Yu TY, Wei JN, Kuo CH, et al. The Impact of Gastric Atrophy on the Incidence of Diabetes. *Sci Rep.* 2017;7:39777.
36. Wan Z, Song L, Hu L, et al. Helicobacter pylori infection is associated with diabetes among Chinese adults. *J Diabetes Investig.* 2020;11(1):199-205. DOI:10.1111/jdi.13102.
37. Jeon CY, Haan MN, Cheng C, et al. Helicobacter pylori infection is associated with an increased rate of diabetes. *Diabetes Care.* 2012;35(3):520-525. DOI:10.2337/dc11-104.
38. Chen YY, Fang WH, Wang CC, et al. Helicobacter pylori infection increases risk of incident metabolic syndrome and diabetes: A cohort study. *PLoS One.* 2019;14(2):e0208913.
39. Han X, Li Y, Wang J, et al. Helicobacter pylori infection is associated with type 2 diabetes among a middle- and old-age Chinese population. *Diabetes Metab Res Rev.* 2016;32(1):95-101.
40. Mansori K, Moradi Y, Naderpour S, et al. Helicobacter pylori infection as a risk factor for diabetes: a meta-analysis of case-control studies. *BMC Gastroenterol.* 2020;20(1):77. Published 2020 Mar 24. DOI:10.1186/s12876-020-01223-0

© 2022 Alias and Elkarsany; This is an Open Access article distributed under the terms of the Creative Commons Attribution License (<http://creativecommons.org/licenses/by/4.0>), which permits unrestricted use, distribution, and reproduction in any medium, provided the original work is properly cited.

Peer-review history:

The peer review history for this paper can be accessed here:  
<https://www.sdiarticle5.com/review-history/85858>