



---

# **Assessment of Physicochemical Characteristics of Waters in Santa Barbara River, Bayelsa State, Nigeria**

**Duke Okoro <sup>a\*</sup> and Lily Chovwe Diejomaoh <sup>a</sup>**

<sup>a</sup> *Department of Chemistry, Federal University of Petroleum Resources, Effurun, Delta State, Nigeria.*

### **Authors' contributions**

*This work was carried out in collaboration between both authors. Both authors read and approved the final manuscript.*

### **Article Information**

DOI: 10.9734/IRJPAC/2022/v23i430471

### **Open Peer Review History:**

This journal follows the Advanced Open Peer Review policy. Identity of the Reviewers, Editor(s) and additional Reviewers, peer review comments, different versions of the manuscript, comments of the editors, etc are available here: <https://www.sdiarticle5.com/review-history/90457>

**Original Research Article**

**Received 13 June 2022**

**Accepted 12 August 2022**

**Published 17 August 2022**

---

## **ABSTRACT**

Effluents received by surface water increase the concentration of heavy metals and nutrients in the water to a level that is harmful to the aquatic organism and pose a health risk to humans. Santa Barbara River is known for its rich biodiversity; and is a fishing site in Bayelsa state, Nigeria. This study examines the physicochemical characteristics of waters in the Santa Barbara River to ascertain anthropogenic influence on the water quality. In two seasons (wet and dry), surface water samples were collected from 20 sampling stations along the Santa Barbara River and from 4 control points and analyzed according to standard methods and procedures. Total suspended solids, polyaromatic hydrocarbons, and sodium were the only parameters that showed a statistical difference between values obtained in the control and study area ( $p > 0.05$ ) at 95% confidence interval. The results of polyaromatic hydrocarbons, lead, chromium and sulphate observed indicated anthropogenic influence on the water quality that may be due to the use of lead in fishing net, combustion of fossil fuel, and waste discharge into the River. Impact mitigation measures are therefore recommended to improve the water quality of the River.

**Keywords:** *Effluent; heavy metals; surface water; Santa Barbara.*

## 1. INTRODUCTION

Surface water is a natural resource used extensively for irrigation, recreation, domestic use, and other purposes. Globally, surface water bodies are the primary dump site for the disposal of effluents [1]. Industries, agricultural activities, and human settlements are the primary source of waste [2]. The waste received by water bodies increases the concentration of heavy metals and nutrients to a level harmful to the aquatic organism and poses a health risk to humans.

Surface water bodies are vulnerable to pollutants because there are a variety of tropic levels present, through which pollutants bioaccumulate in the bodies of aquatic organisms [3]. Heavy metals become toxic when bioaccumulated above the permissible limit. It is paramount to preserve the quality of fish because it is a rich source of protein for humans [4]. Water quality, therefore, determines the survival of aquatic organisms.

Water quality is measured by assessing water's physical, chemical, and biological characteristics against standards used to determine water use for various purposes [5]. Fishes in water bodies with DO concentration of 0.3 mg/L can die if exposed to this concentration for a long time. Water bodies should have at least 1.0mg/L of dissolved oxygen to sustain the aquatic organisms. DO of 5.0 mg/L is adequate [6]. Chemical oxygen demand (COD) and biological oxygen demand (BOD) are important pollution indicators in the water quality assessment used to estimate the amount of oxygen used up in the degradation of organic matter present in the aquatic system [7]. Polyaromatic hydrocarbons (PAHs) are toxic organic compounds that persist in the environment. PAHs bioaccumulate in the bodies of aquatic organisms when it enters the food chain [8]. Heavy metals are metals and metalloids with a relatively high density in the ranges of  $3.5 - 7\text{gcm}^{-3}$ ; these metals are poisonous even at low concentrations [9]. Heavy metal pollution in the environment is a global challenge because it is toxic at low concentrations; however, heavy metals such as copper, zinc, iron, chromium, and manganese have a biological function. Above optimum concentration in the environment, essential heavy metals become toxic. Metals such as Arsenic, lead, and cadmium is non-essential and have no biological function [3; 10]. A high concentration of heavy metals in humans can damage the liver, kidney, and brain; and in severe cases, it can cause cancer [9].

Santa Barbara River is a fishing site in Bayelsa state, Nigeria. The River is known for its rich biodiversity; oysters, periwinkles, crayfish, crabs, and shrimps are some aquatic species harvested from the River. Fishing is the main occupation of the inhabitants of the community. Fishes are harvested and Sold to Urban areas like Bassambiri, Nembe town, and Port Harcourt. The people are also involved in petty trade, processing fish harvested (drying and the removal of shells), and farming on a small scale. The communities in the Santa Barbara locality are crude oil-producing communities.

Since the discovery of crude oil in the Niger Delta, its exploration has negatively impacted the environment [11]. The disadvantages of oil exploration include Oil spillage, gas flaring, and the chemicals used in oil processing [12]. Oil spillage results in the discharge of heavy metals and hydrocarbons into receiving surface water, groundwater, and soil [13]. Leaks from pipelines, discharge from urban settlements, and accidental discharge are some ways crude oil is spilled into the environment [12]. It is vital to investigate the impact of oil exploration and other anthropogenic activities in the study area on the water quality of the Santa Barbara River to preserve the aquatic species in the River. This study gives an insight into the physicochemical characteristics of the Santa Barbara River to ascertain anthropogenic influence on the water quality

## 2. MATERIALS AND METHODS

### 2.1 Study Area

The River is a fishing site in the Nembe Local Government Area of Bayelsa state. The town of Nembe is the headquarters of Nembe Local Government Area (LGA). Nembe LGA had a total population size of 130 966 at the 2006 population census. Santa Barbara River flows into the Atlantic Ocean. Many communities in the Santa Barbara River are rural. Figure: 1 is the map showing the sampling points along the Santa Barbara River

### 2.2 Sample Collection

Surface water sampling was done in two seasons (wet and dry seasons) following standard methods and procedures. The month of November to March represents the dry season, while April to October represents the wet season. A total of 20 sampling stations along the Santa Barbara River were selected close to operational

oil and gas facilities. The control points were areas where there is minimum influence from industrial activities. pH, Conductivity, Dissolved oxygen, Total Dissolved Solids, Turbidity, and Temperature were determined in-situ. Samples for BOD5, Heavy metals, and chemical oxygen demand were collected separately. Heavy metals were acidified with nitric acid pH < 2. Chemical Oxygen Demand was acidified with sulphuric acid pH < 2. All samples were preserved at < 4°C and delivered in that state to Dukoria laboratory Ltd, Effurun in Delta state.

### 2.3 Laboratory Analysis

All ex-situ analyses were done based on APHA, [14] standard procedures developed and

validated in Dukoria Laboratories. The analytical methods adapted are presented in Table 1.

### 2.4 Statistical Analysis

The physicochemical results were subjected to Descriptive statistics analyses to compute the mean and standard deviation. Pearson correlation analysis determined the relationship between the parameters measured. One-way analysis of variance (ANOVA) was applied to determine the significant difference between the sampling and control area at 95% confidence level. Microsoft Excel, Office 365 was used to compute all statistical Analyses.

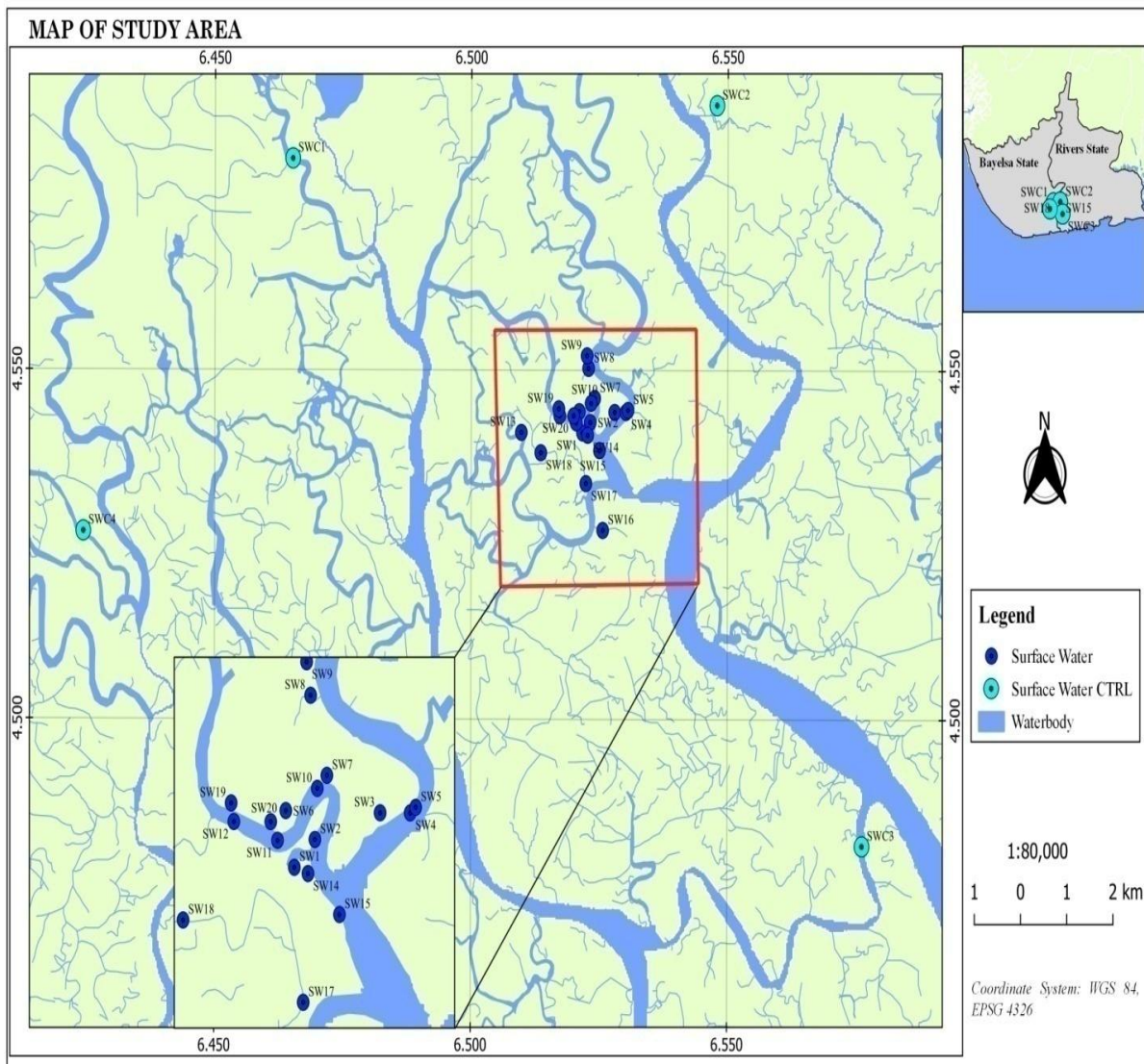


Fig. 1. Map showing the sampling points in the study area

## 2.5 Analytical Methods

**Table 1. Analytical methods for the parameters analyzed in this study**

Parameters	Analytical Methods
<b>Physico-chemical</b>	
pH	Electronic method (APHA - 4500-H+)
Total dissolved solids (TDS), mg/L	APHA 2540-C
Conductivity, $\mu\text{S/cm}$	APHA 2510 B
Total Suspended Solids (TSS), mg/L	Gravimetric method (APHA-209-D)
Turbidity, NTU	Nephelometric method (APHA – 2130-B)
<b>Anions</b>	
Sulphate, mg/L	Turbidity method (APHA-426C SO42-E)
Nitrate, mg/L	Cadmium Reduction method (ASTM, 2016 -D3867)
<b>Gross organics</b>	
DO, mg/L	APHA – 4500-O C
COD, mg/L	Dichromate method (Reflux) (APHA – 5300 B)
BOD, mg/L	5 day method (APHA 5210B)
<b>Inorganics</b>	
Magnesium, mg/L	APHA3500
Metals	Atomic Absorption Spectrophotometer (AAS), (APHA 3000)
PAHs	Polynuclear Aromatic Hydrocarbons (APHA 6440)

Source: APHA, [14]

## 3. RESULTS AND DISCUSSIONS

The result of the descriptive statistics of physicochemical parameters of surface water from Santa Barbara River in the wet and dry seasons is summarized in Table 2 and Table 3, respectively.  $P > 0.05$  in Table 2 and Table 3 represents differences that are statistically insignificant between sampling and control points at 95% confidence interval.  $P > 0.05$  connotes statistical significance between sampling points and control points at 95% confidence interval.

### 3.1 Pearson Correlation Matrix and Seasonal Variation

Tables 4 and Table 5 shows the correlation coefficient ( $r$ ) of the physicochemical parameter, with their statistical significance at 0.05 alpha levels ( $p$  values) for wet and dry seasons.

Correlation coefficients show the correlation between variables and compute the statistical significance between water quality variables. The correlation coefficient ( $r$ ) has values between +1 and -1. A strong positive correlation between parameters denotes that an increase in one parameter results in a subsequent increase in the other. A negative correlation between parameters indicates that an increase in one parameter causes the other parameter to decrease [16]. +0.8 to + 1.0 and -0.8 to -1.0 represents strong positive and negative correlation respectively; +0.5 to + 0.8 and -0.5 to

-0.8 represents moderate positive and negative correlation respectively; + 0.0 to + 0.5 and -0.0 to -0.5 are for weak positive and negative correlation respectively, between variables [15] (Lencha et al, 2021).

### 3.2 Physicochemical Parameters of the Surface Water

#### pH

pH values observed in the study area ranged from 5.9 – 7.2 and 7.06 – 8.20, with mean values of  $6.44 \pm 0.30$  and  $7.59 \pm 0.28$  during the wet and dry seasons. pH in the control area ranged from 6.3 – 7.30 and 7.22 – 7.76, with average values of  $6.83 \pm 0.41$  and  $7.48 \pm 0.25$  during the wet and dry seasons. 6.5 – 9.0 is the ideal pH range for fish growth [16]. The values observed in this study are within this optimum range for fish in aquatic systems. Lawrence et al. [17] reported pH values of 6.29 – 6.71 in similar brackish water environment.

#### Electrical Conductivity (EC)

Electrical Conductivity (EC) values measured in the study area were between 260 – 1020  $\mu\text{S/cm}$  and 15,710 – 17,760  $\mu\text{S/cm}$ , with mean values of  $526 \pm 234.05$   $\mu\text{S/cm}$  and  $16,569 \pm 636$   $\mu\text{S/cm}$  during the wet and dry seasons respectively. The EC values measured in the control stations ranged from 240 – 564  $\mu\text{S/cm}$  and 11, 220 – 19,600  $\mu\text{S/cm}$ , with the mean value of  $348 \pm 271$

**Table 2. Physicochemical parameters of surface water in Santa Barbara during the wet season**

Physico-chemical parameters	Study area Range	Study area mean $\pm$ S.D	Control area mean $\pm$ S.D	P value	Control area Range
pH	5.9 – 7.2	6.44 $\pm$ 0.30	6.83 $\pm$ 0.41	P < 0.05	6.3 – 7.30
Electrical Conductivity, $\mu$ S/cm	260 – 1020	526 $\pm$ 234.05	348 $\pm$ 271	P > 0.05	240 – 564
Total Suspended Solids (TSS), mg/L	9 – 162.50	51.53 $\pm$ 36.62	138 $\pm$ 68.57	P < 0.05	67.5 -225
Total Dissolved Solids (TDS), mg/L	166 – 653	336.65 $\pm$ 149.88	1003.5 $\pm$ 173	P > 0.05	26 – 361
Dissolved Oxygen (DO), mg/L	4.9 – 5.8	5.33 $\pm$ 0.19	5.23 $\pm$ 0.12	P > 0.05	5.1 – 5.4
Salinity, %	14.7 – 27.40	20.71 $\pm$ 3.47	17.9 $\pm$ 2.82	P > 0.05	14.2 – 21
Biochemical Oxygen Demand (BOD), mg/L	1.00 – 3.2	2.00 $\pm$ 3.21	2.475 $\pm$ 1.83	P > 0.05	1.2 -5.20
Chemical Oxygen Demand (COD), mg/L	7.8 – 14.80	11.96 $\pm$ 1.99	8.30 $\pm$ 2.43	P < 0.05	5.1 – 10.80
Turbidity, NTU	10 – 23.50	17.59 $\pm$ 4.04	13.50 $\pm$ 6.60	P > 0.05	6 – 30
<b>Organics, mg/L</b>					
Polynuclear Aromatic Hydrocarbon (PAHs)	0.03 – 0.16	0.09 $\pm$ 0.03	0.03 $\pm$ 0.02	P < 0.05	0.01 – 0.05
BTEX	<0.005	<0.005	<0.005	-	<0.005
<b>Anions (mg/L)</b>					
Sulphate, (SO <sub>4</sub> <sup>2-</sup> )	1.97 – 133	54.61 $\pm$ 33.37	29.26 $\pm$ 13.92	P > 0.05	19.63 – 49.78
Nitrate, (NO <sub>3</sub> <sup>-</sup> )	0.01 – 0.04	0.02 $\pm$ 0.01	0.021 $\pm$ 0.01		0.01 – 0.05
<b>Cations (mg/L)</b>					
Calcium, (Ca <sup>2+</sup> )	3.31 – 21.70	6.15 $\pm$ 0.94	13.47 $\pm$ 14.03	P > 0.05	6.05 – 34.51
Magnesium, (Mg <sup>2+</sup> )	7.06 – 30.87	14.71 $\pm$ 1.28	17.87 $\pm$ 15.38	P > 0.05	5.32 – 40
Sodium, (Na <sup>+</sup> )	46.05 – 181	93.39 $\pm$ 9.29	278.37 $\pm$ 182	P < 0.05	7.21 – 1001
<b>Heavy Metals (mg/L)</b>					
Iron, (Fe)	0.629 – 9.05	1.92 $\pm$ 0.39	2.52 $\pm$ 0.37	P > 0.05	1.97 – 2.74
Zinc, (Zn)	0.05 – 0.19	0.09 $\pm$ 0.01	0.28 $\pm$ 0.50	P > 0.05	0.01 – 1.04
Chromium, (Cr)	13.23 – 44.73	28.56 $\pm$ 1.86	23.26 $\pm$ 5.34	P > 0.05	20.29 – 31.26
Lead, (Pb)	0.51 – 1.53	1.19 $\pm$ 0.12	<0.01	-	<0.01
Copper, (Cu)	0.05 – 2.17	0.29 $\pm$ 0.11	0.23 $\pm$ 0.007	P > 0.05	0.22 – 0.24
Cadmium, (Cd)	<0.002	<0.002	<0.002	-	<0.002
Mercury, (Hg)	<0.001	<0.001	<0.001	-	<0.001
Vanadium, (V)	<0.001	<0.001	<0.001	-	<0.001
Nickel (Ni)	<0.010	<0.010	0.41 $\pm$ 0.12	-	0.01 – 0.56
Barium (Ba)	<0.005	<0.005	<0.005	-	<0.005

Note, S.D – standard deviation, BTEX - benzene toluene ethylbenzene

**Table 3. Physicochemical parameters of surface water in Santa Barbara during the dry season**

Physico- chemical parameter	Study area Range	Study area Mean $\pm$ S.D	Control area mean $\pm$ S.D	P – value	Control area Range
pH	7.06 – 8.20	7.59 $\pm$ 0.28	7.48 $\pm$ 25	P > 0.05	7.22 – 7.76
Electrical Conductivity, $\mu$ S/cm	15710 - 17760	16569 $\pm$ 636	15615 $\pm$ 3435	P > 0.05	11220 – 19600
Total Suspended Solids (TSS), mg/L	0.00 – 17	5.38 $\pm$ 3.84	3.88 $\pm$ 0.85	P > 0.05	3 – 5
Total Dissolved Solids (TDS), mg/L	7046 – 8876	8275 $\pm$ 408	7804 $\pm$ 1712	P > 0.05	5624 – 9802
Dissolved Oxygen (DO), mg/L	2.5 – 4.80	3.91 $\pm$ 0.67	4.05 $\pm$ 1.05	P > 0.05	2.52 – 4.80
Salinity, %	25 – 32	29.14 $\pm$ 1.97	26.25 $\pm$ 1.25	P < 0.05	25 – 28
Biochemical Oxygen Demand (BOD), mg/L	2 – 8.60	4.95 $\pm$ 2.31	4.4 $\pm$ 3.05	P > 0.05	2.30 – 8.90
Chemical Oxygen Demand (COD), mg/L	6.9 – 13.20	9.23 $\pm$ 1.68	9.25 $\pm$ 1.08	P > 0.05	7.8 – 10.30
Turbidity, NTU	0.00 – 18	3.35 $\pm$ 4.51	1.75 $\pm$ 2.21	P > 0.05	0.00 – 5.00
<b>Organics (mg/L)</b>					
Polynuclear Aromatic Hydrocarbon (PAHs)	0.11 – 0.53	0.25 $\pm$ 0.12	0.08 $\pm$ 0.02	P < 0.05	0.07 – 0.11
BTEX	<0.005	<0.005	<0.005	-	<0.005
<b>Anions (mg/L)</b>					
Sulphate, (SO <sub>4</sub> <sup>2-</sup> )	7.87 – 3769	701 $\pm$ 574	647 $\pm$ 216	P > 0.05	374 – 8367
Nitrate, (NO <sub>3</sub> <sup>-</sup> )	0.001 – 0.07	0.01 $\pm$ 0.02	0.003 $\pm$ 0.002	P > 0.05	0.001 – 0.006
<b>Cations (mg/L)</b>					
Calcium, (Ca <sup>2+</sup> )	123.43 – 220.07	166 $\pm$ 24.07	168 $\pm$ 41.31	P > 0.05	118.11 – 217.95
Magnesium, (Mg <sup>2+</sup> )	16.91 – 21.30	19.86 $\pm$ 0.98	18.73 $\pm$ 4.11	P > 0.05	13.5 – 23.52
Sodium, (Na <sup>+</sup> )	1954.56 – 2462.20	2295 $\pm$ 113	2165 $\pm$ 475.16	P > 0.05	1560 – 2719
<b>Heavy Metals (mg/L)</b>					
Iron, ( Fe)	0.29 – 5.59	2.09 $\pm$ 1.23	1.09 $\pm$ 0.65	P > 0.05	0.11 – 1.44
Zinc, (Zn )	0.51 – 1.57	0.80 $\pm$ 0.23	0.82 $\pm$ 0.22	P > 0.05	0.573 – 1.02
Chromium, (Cr)	<0.006	<0.006	<0.006		<0.006
Lead, (Pb)	0.1 – 3.19	1.85 $\pm$ 0.83	2.06 $\pm$ 0.53	P > 0.05	1.49 – 2.65
Copper, (Cu)	0.03– 0.19	0.12 $\pm$ 0.04	0.13 $\pm$ 0.08	P > 0.05	0.02 – 0.20
Cadmium, (Cd)	0.01 – 0.68	0.12 $\pm$ 0.20	0.11 $\pm$ 0.01	P > 0.05	0.09 – 0.12
Mercury, (Hg)	<0.001	<0.001	<0.001		<0.001
Vanadium, (V)	<0.001	<0.001	<0.001		<0.001
Nickel (Ni)	0.18 – 1.24	0.64 $\pm$ 0.32	0.66 $\pm$ 0.49	P > 0.05	0.17 – 1.13
Barium ( Ba)	<0.005	<0.005	<0.005	-	<0.005

Note, S.D – standard deviation, BTEX - benzene toluene ethylbenzene

**Table 4. Correlation matrix showing the relationship between the measured physicochemical parameters in the wet season**

	pH	EC	TSS	TDS	DO	Salinity	BOD	COD	Turbidity	PAHs	SO42-	NO3-	Ca 2+	Mg2+	K+	Na+	Fe	Zn	Cr	Cu
pH	1																			
EC	-0.266	1																		
TSS	-0.037	-0.158	1																	
TDS	-0.266	<b>0.999</b>	-0.158	1																
DO	-0.235	<b>-0.408</b>	-0.136	<b>-0.409</b>	1															
Salinity	<b>-0.481</b>	0.317	0.390	0.317	-0.175	1														
BOD	-0.089	-0.036	<b>0.732</b>	-0.036	-0.095	0.087	1													
COD	0.019	-0.002	0.108	-0.001	0.159	-0.021	0.082	1												
Turbidity	0.207	0.046	-0.365	0.046	-0.031	-0.319	-0.291	0.064	1											
PAHs	0.194	0.015	-0.001	0.015	0.041	-0.132	-0.056	-0.252	0.260	1										
SO42-	-0.010	-0.018	-0.130	-0.018	-0.176	0.135	-0.374	-0.174	0.057	-0.088	1									
NO3-	-0.112	0.001	0.101	0.001	0.089	-0.164	0.005	0.203	-0.310	-0.289	-0.031	1								
Ca 2+	0.300	-0.119	-0.0478	-0.119	-0.013	-0.280	-0.052	-0.066	0.441	0.344	-0.116	<b>-0.415</b>	1							
Mg2+	0.344	0.214	-0.125	0.214	-0.360	-0.293	-0.153	-0.025	0.221	0.379	-0.096	-0.255	0.557	1						
K+	-0.266	<b>0.999</b>	-0.158	<b>1</b>	<b>-0.409</b>	0.317	-0.036	-0.001	0.046	0.015	-0.018	0.001	-0.112	0.214	1					
Na+	-0.266	<b>0.999</b>	-0.158	<b>1</b>	-0.409	0.317	-0.036	-0.001	0.046	0.015	-0.018	0.001	-0.119	0.214	1	1				
Fe	0.376	-0.274	-0.140	-0.274	0.136	-0.337	-0.260	-0.025	0.227	0.505	-0.063	-0.255	<b>0.818</b>	<b>0.662</b>	-0.274	-0.274	1			
Zn	-0.266	<b>0.999</b>	-0.158	<b>0.999</b>	<b>-0.409</b>	0.317	-0.036	-0.001	0.047	0.013	-0.019	0.004	-0.119	0.214	<b>0.999</b>	<b>0.999</b>	-0.275	1		
Cr	0.089	0.074	0.049	0.074	-0.036	-0.132	0.243	0.331	0.171	0.267	-0.285	0.021	-0.218	0.139	0.074	0.074	0.005	0.075	1	
Cu	0.585	-0.199	-0.173	-0.200	0.039	<b>-0.416</b>	0.051	-0.126	0.148	0.155	-0.118	-0.174	0.041	-0.124	-0.199	-0.200	-0.024	-0.200	-0.08	1

Values in bold are statistically different from 0 at 0.05 level(two tail)

**Table 5. Correlation matrix showing the relationship between the measured physicochemical parameters in the dry season**

	pH	EC	TSS	TDS	DO	Salinity	BOD	COD	Turbidity	PAH	SO4 <sup>2-</sup>	NO3 <sup>-</sup>	Ca 2+	Mg2+	K+	Na+	Fe	Zn	Pb	Cu	Cd	Ni	
pH	1																						
EC	-0.121	1																					
TSS	0.387	<b>-0.482</b>	1																				
TDS	-0.141	<b>0.833</b>	-0.288	1																			
DO	-0.095	0.179	-0.034	0.241	1																		
Salinity	-0.240	-0.063	0.253	0.079	0.074	1																	
BOD	0.164	-0.420	0.267	-0.397	<b>-0.846</b>	0.004	1																
COD	-0.113	<b>-0.415</b>	0.268	-0.325	<b>-0.699</b>	0.136	<b>0.885</b>	1															
Turbidity	0.402	<b>-0.440</b>	<b>0.748</b>	-0.287	0.026	0.049	0.201	0.079	1														
PAH	-0.172	0.013	0.198	0.081	<b>0.444</b>	0.108	-0.137	0.030	0.184	1													
SO4 <sup>2-</sup>	-0.158	0.217	0.033	0.196	0.380	-0.114	-0.394	<b>-0.476</b>	0.079	0.226	1												
NO3 <sup>-</sup>	-0.010	0.373	-0.313	0.225	-0.384	-0.263	0.026	-0.041	-0.195	-0.326	-0.132	1											
Ca 2+	-0.143	<b>0.613</b>	-0.157	<b>0.448</b>	0.185	-0.178	-0.33	<b>-0.401</b>	-0.145	0.077	<b>0.509</b>	0.183	1										
Mg2+	-0.142	<b>0.833</b>	-0.289	<b>0.999</b>	0.241	0.081	-0.398	-0.325	-0.287	0.081	0.196	0.225	<b>0.448</b>	1									
K+	-0.141	<b>0.833</b>	-0.288	1	0.241	0.079	-0.397	-0.324	-0.287	0.081	0.196	0.225	<b>0.448</b>	<b>0.999</b>	1								
Na+	-0.141	<b>0.833</b>	-0.288	1	0.241	0.079	-0.397	-0.325	-0.287	0.081	0.196	0.225	<b>0.448</b>	<b>0.999</b>	1	1							
Fe	0.083	0.175	0.244	0.085	0.227	-0.131	-0.273	-0.171	0.245	0.254	0.045	0.042	0.242	0.084	0.085	0.085	1						
Zn	0.222	-0.291	0.171	-0.316	-0.066	-0.180	0.087	0.029	0.119	-0.255	-0.063	-0.062	0.035	-0.318	-0.316	-0.316	0.365	1					
Pb	0.186	328	-0.112	0.286	0.286	-0.288	-0.155	-0.255	-0.058	0.030	0.189	-0.126	<b>0.435</b>	0.285	0.286	0.286	-0.150	0.105	1				
Cu	-0.345	-0.006	-0.041	0.028	-0.075	-0.096	-0.008	-0.097	0.106	-0.238	0.236	0.259	<b>0.469</b>	0.028	0.028	0.028	-0.220	0.137	0.345	1			
Cd	<b>-0.442</b>	040	-0.385	0.019	0.292	-0.045	-0.296	-0.279	-0.180	-0.085	0.189	-0.126	0.292	0.020	0.018	0.019	-0.191	0.003	0.155	0.302	1		
Ni	-0.335	<b>0.451</b>	-0.319	0.211	0.329	-0.063	-0.339	-0.367	-0.316	0.283	<b>0.511</b>	-0.230	<b>0.625</b>	0.212	0.212	0.211	0.063	-0.056	<b>0.536</b>	0.221	<b>0.418</b>	1	

Values in bold are statistically different from 0 at 0.05 level(two tail)



$\mu\text{S/cm}$  and  $15615 \pm 3435 \mu\text{S/cm}$  during the wet and dry seasons respectively. There was no significant difference between EC values observed in sampling points and control points ( $p > 0.05$ ) during the wet and dry seasons. Higher concentration of EC was recorded during the dry season (Fig. 2) A high EC concentration indicates elevated soluble salt concentration in the water column [18]. The strong positive correlation between EC and  $\text{K}^+$ ,  $\text{Na}^+$ ,  $\text{Ca}^{2+}$ ,  $\text{Mg}^{2+}$  and total dissolved solids show that these salt ions may have contributed to the elevated EC concentration in the study area during the dry season (Table 5). The seasonal variation observed may be due to seawater mixing with the River [19]. Ngah et al. [20] reported higher EC values in the range of 13,663 – 25,325  $\mu\text{S/cm}$  (wet season) and 19,773 – 24,052  $\mu\text{S/cm}$  (dry season) from Elechi creek in upper Bonny Estuary, River state, Nigeria. Edori et al. [19] reported 26, 100 - 27,200  $\mu\text{S/cm}$  from Silver River, Southern Ijaw, Bayelsa State, Niger Delta, Nigeria.

#### Total suspended solids (TSS)

Total Suspended Solids observed in the study area ranged from 9 – 162.50 mg/L and 0.00 – 17 mg/L, with mean values of  $51.53 \pm 36.62 \text{ mg/L}$  and  $5.38 \pm 3.84 \text{ mg/L}$  in the wet and dry seasons. TSS recorded in the control area ranged from 67.5 – 225 mg/L and 3 – 5 mg/L with mean values of  $138 \pm 68.57 \text{ mg/L}$  and  $3.88 \pm 0.85 \text{ mg/L}$  during the wet and dry seasons. There was a significant statistical difference between TSS values observed in the study and control area ( $p < 0.05$ ) during the wet season (Fig. 3). In the dry season, there was no significant statistical difference between TSS values obtained in the study and control area ( $p > 0.05$ ). The Moderate positive correlation between TSS and biological oxygen demand (BOD) in the wet season (Table 4) suggests that organic matter is a component of TSS in the water body. Increased surface runoff caused by heavy rainfall may have washed organic matter into the water body. Edori and Nna, [7] reported a similar low concentration of 7.31mg/L from New Calabar River, Port Harcourt, Nigeria.

#### Total Dissolved Solids (TDS)

The Total Dissolved Solids values in the study area ranged from 166 – 653 mg/L and 7046 –

8876 mg/L, with an average concentration of  $336.65 \pm 149.88 \text{ mg/L}$  and  $8275 \pm 408 \text{ mg/L}$  during the wet and dry seasons. TDS measured in the control area varied between 26 – 361 mg/L (wet season) and 5624 – 9802 mg/L (dry season), with mean concentrations of  $1003.5 \pm 173 \text{ mg/L}$  and  $7804 \pm 1712 \text{ mg/L}$ . There was no statistically significant difference between TDS recorded in the sampling and control points ( $p > 0.05$ ) in both seasons. Inorganic salts are the main constituents of total dissolved solids in aquatic systems [21]. The strong positive correlation between TDS and ions of inorganic salts such as  $\text{Zn}$ ,  $\text{K}^+$ , and  $\text{Na}^+$  (wet season) and  $\text{Mg}^{2+}$ ,  $\text{K}^+$  and  $\text{Na}^+$  (dry season) infers that these ions contributed to the TDS concentration observed in both seasons. Brackish water usually contains TDS between 500 mg/L to 48000 mg/L [22]. The TDS concentration obtained in this study and control area during the dry season is within the stipulated concentration often measured in a brackish water environment. Woke and Umesi, [23] reported comparable to  $2657 \pm 24.4 \text{ mg/L}$  in a study conducted in the New Calabar River in Port Harcourt, Niger Delta. Ngah et al. [20] reported higher TDS values in the range of 11,700 mg/L to 26,250 mg/L in a study conducted in Elechi Creek in the Upper Bonny Estuary in Rivers State.

#### Dissolved oxygen (DO)

Dissolved Oxygen (DO) values measured in the study area varied between 4.9 – 5.8 mg/L and 2.5 – 4.80 mg/L, with average values of  $5.33 \pm 0.19 \text{ mg/L}$  and  $3.91 \pm 0.67 \text{ mg/L}$  during the wet and dry seasons. DO values observed in the control area ranged from 5.1 – 5.4 mg/L and 2.52 – 4.80 mg/L, with mean values of  $5.23 \pm 0.12 \text{ mg/L}$  and  $4.05 \pm 1.05 \text{ mg/L}$  for the wet and dry seasons. There was no statistical difference between DO values recorded in the study and control area ( $p > 0.05$ ) in both seasons. The correlation between chemical oxygen demand, biological oxygen demand, and polyaromatic hydrocarbons show that organic matter and PAHs in the water column may be responsible for oxygen depletion observed in the dry season. Microbes utilize oxygen in the degradation of PAHs and organic matter in aquatic systems [24,7]. Wokoma and Njoku, [25] reported values in the range of  $3.22 \pm 0.02 - 6.42 \pm 0.02 \text{ mg/L}$  in a study carried out in the lower Sombreiro River in Niger Delta, Nigeria.

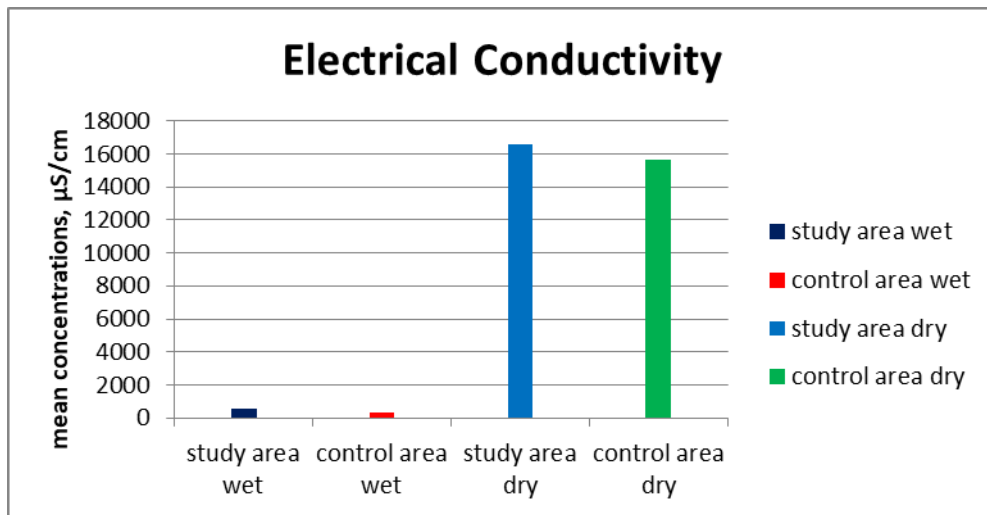


Fig. 2. Mean concentration of electrical conductivity from the study area

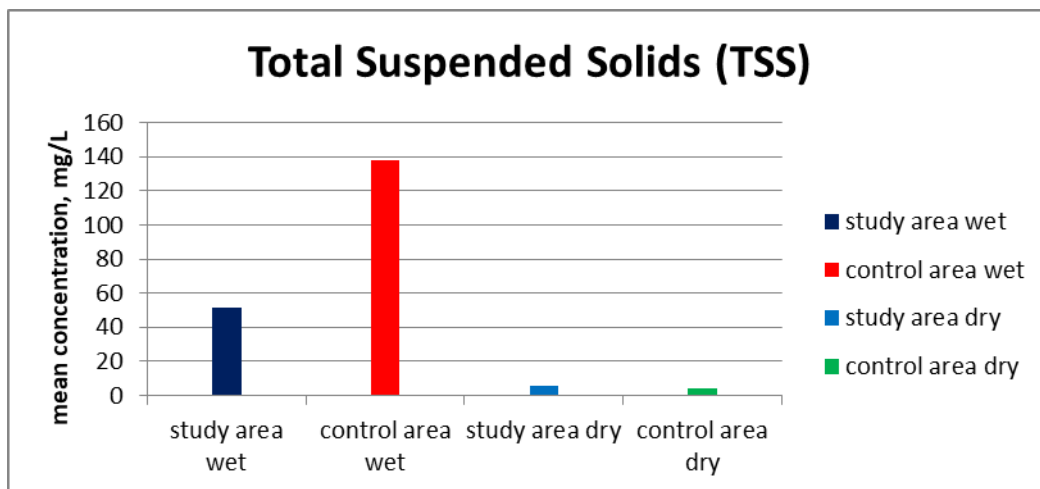


Fig. 3. Mean concentration total suspended solids from the study area

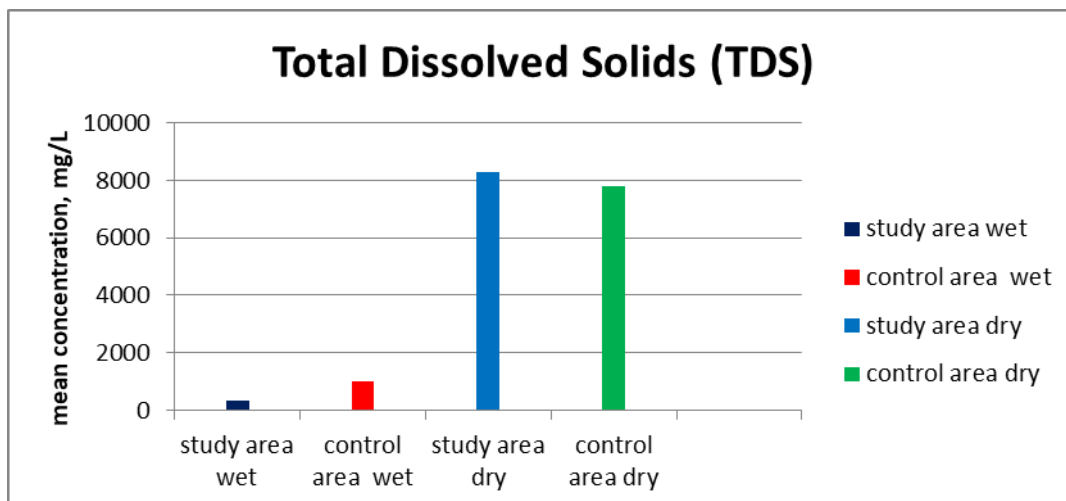


Fig. 4. Mean concentration of total dissolved solids from the study area

## Salinity

The salinity concentration observed in the study stations ranged from 14.7 – 27.40 % and 25 – 32 %, with average concentrations of  $20.71 \pm 3.47$  % and  $29.14 \pm 1.97$  % in the wet and dry seasons. The control area salinity values varied from 14.2 – 21% and 25 – 28 %, with mean values of  $17.9 \pm 2.82$  % and  $26.25 \pm 1.25$  % during the wet and dry seasons. High salinity during the dry season corroborates with the concentration of electrical conductivity and total dissolved solids observed. The lower salinity measured in this study during the wet season may be due to the dilution effect of total dissolved salts in the water column caused by increased rain falls [26]. Salinity values obtained in this study suggest a brackish water environment. Salinity higher than 1 % is brackish or marine, while salinity values lower than 1% is characteristics of a freshwater environment [27].

## Biochemical oxygen (BOD)

Biochemical oxygen (BOD) concentration in the sampling stations varied between 1.00 – 3.20 mg/L and 2 – 8.60 mg/L, with a mean concentration of  $2.00 \pm 3.21$  mg/L and  $4.95 \pm 2.31$  mg/L during the wet and dry seasons. BOD values obtained in the control stations ranged from 1.2 -5.20 mg/L and 2.30 – 8.90 mg/L, with mean values of  $2.475 \pm 1.83$  mg/L and  $4.4 \pm 3.05$  mg/L in the wet and dry seasons respectively. There was no significant statistical difference between BOD values obtained in the sampling and the control stations ( $p > 0.05$ ) in the wet and

dry seasons. Unpolluted natural water bodies have a BOD value of 5 mg/L or less [28]. The study area had BOD values of less than 5mg/L in both seasons. Edori and Nna [7] reported corresponding BOD values in the range of  $4.28 \pm 1.08$ - $6.11 \pm 1.33$  mg/L with a mean concentration of 4.92 mg/L.

## Chemical oxygen demand (COD)

The study area had COD values in the range of 7.8 – 14.80 mg/L and 6.9 – 13.20 mg/L, with average COD values of  $11.96 \pm 1.99$  mg/L and  $9.23 \pm 1.68$  mg/L during the wet and dry season. COD in the control area ranged from 5.1 – 10.80 mg/L and 7.8 – 10.30 mg/L, with mean values of  $8.30 \pm 2.43$  mg/L and  $9.25 \pm 1.08$  mg/L in both seasons. There was a statistical difference between COD values observed in the sampling points and control points ( $p < 0.05$ ) during the wet season. The study area had higher values (Fig. 5). No statistical difference between COD values in the sampling and control points ( $p > 0.05$ ) in the dry season. A significantly weak negative correlation between sulphate, calcium and electric conductivity suggests that they contributed to the COD values measured in the study area during the dry season. COD in surface water usually varies between 20mg/L or less for unpolluted water bodies to 200mg/L for water bodies receiving effluents [29]. The COD values observed in this study is that of an unpolluted environment. Emoyanaet al. (2008) reported a higher range of 40.88 - 52.64 mg L from a study conducted in River Ijana, Ekpan, in Delta State, Nigeria.

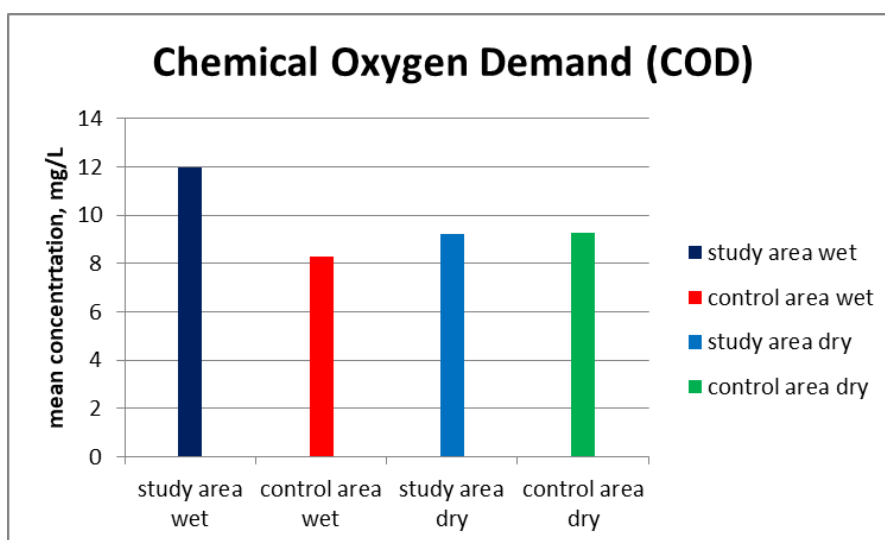


Fig. 5. Mean concentration of chemical oxygen demand in study area

### Turbidity (NTU)

Turbidity values measured in the study area were between 10 – 23.50 NTU and 0.00 – 18 NTU, with mean values of  $17.59 \pm 4.04$  NTU and  $3.35 \pm 4.51$  NTU in the wet and dry seasons. Turbidity values obtained in the control area ranged from 6 – 30 NTU and 0.00 – 5.00 NTU, with mean values of  $13.50 \pm 6.60$  NTU and  $1.75 \pm 2.21$  NTU for the wet and dry seasons. No statistically significant difference between turbidity values was recorded in the sampling point and control points in the wet and dry seasons ( $p > 0.05$ ). Higher turbidity values was observed in the study area during the wet season (Fig. 6). The high turbidity values observed in the wet season may be due to increased surface runoff caused by heavy rainfall. Seiyaboh et al. [30] reported similar turbidity values of 22.17 - 31.23 NTU in a study conducted in River Orashi in Eastern Niger Delta, Nigeria.

### Polynuclear Aromatic Hydrocarbon (PAHs)

Polynuclear Aromatic Hydrocarbon (PAHs) concentration in the study area varied between 0.03 – 0.16 mg/L and 0.11 – 0.53 mg/L with mean concentration of  $0.09 \pm 0.03$  mg/L and  $0.25 \pm 0.12$  mg/L in the wet and dry seasons respectively. The control stations had PAHs values in the range of 0.01 – 0.05 mg/L and 0.07 – 0.11 mg/L with mean concentration of  $0.03 \pm 0.02$  mg/L and  $0.08 \pm 0.02$  mg/L. PAHs values in the study area were statistically different from values obtained in the control area ( $p < 0.05$ ) during the wet and dry seasons. The high concentration of PAHs in this study may be a

result of fish drying and roasting, fossil fuel combustion, and incomplete burning of wood, coal, and garbage in the study area [31]. High PAHs values observed in this study are comparable to 0.008 – 0.249 mg/L reported by Nwineewii and Abiye, [32] in a study conducted in some creeks in South East Rivers State, Niger Delta.

### Sulphate

Sulphate values in the study area ranged from 19.63 – 49.78 mg/L and 7.87 – 3769 mg/L, with an average sulphate concentration of  $54.61 \pm 33.37$  mg/L and  $701 \pm 574$  mg/L in the wet and dry seasons. Sulphate measured in the control area ranged from 19.63 – 49.78 mg/L and 374 – 8367 mg/L, with mean values of  $29.26 \pm 13.92$  mg/L and  $647 \pm 216$  mg/L for the wet and dry seasons. No statistical difference was between sulphate concentration observed in the sampling and control stations ( $p > 0.05$ ) in both seasons (Fig. 7). Pearson correlation analysis showed a moderate positive correlation between sulphate, calcium, and nickel in the dry season; this relationship suggests a similar pollution source. Sources of sulphate in surface water may be due to washing clothes in the river with synthetic fertilizer, sewage infiltration, and the weathering of rocks [33]. Wokoma and Njoku, [25] reported corresponding Sulphate values in the range of  $309 \pm 7.0 - 988 \pm 8.0$  mg/L from Lower Sombreiro River, Niger Delta. Vincent-Akphua et al. [34] reported sulphate concentration of 115 – 654 mg/L from a study conducted in Bodo Creek in the Niger Delta.

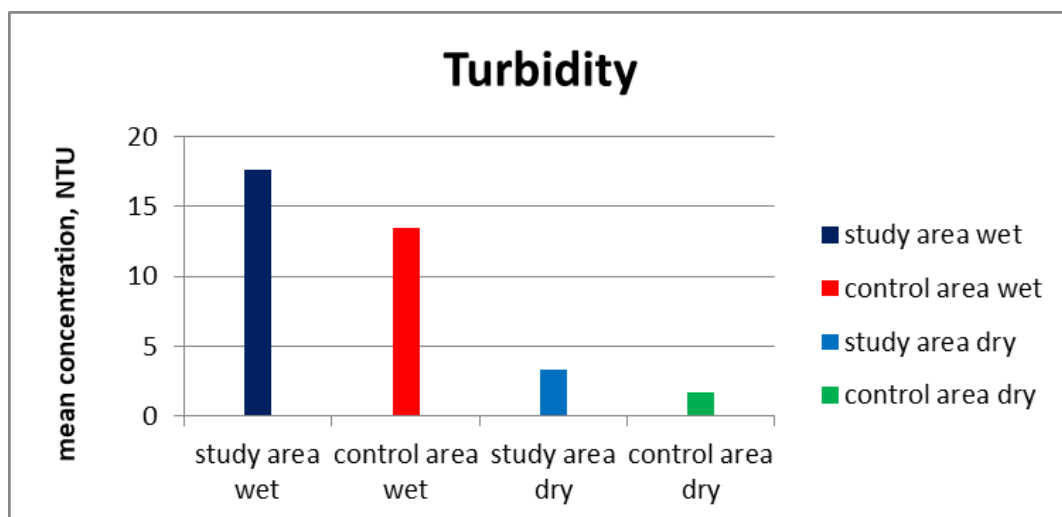


Fig. 6. Mean concentration of turbidity from the study area

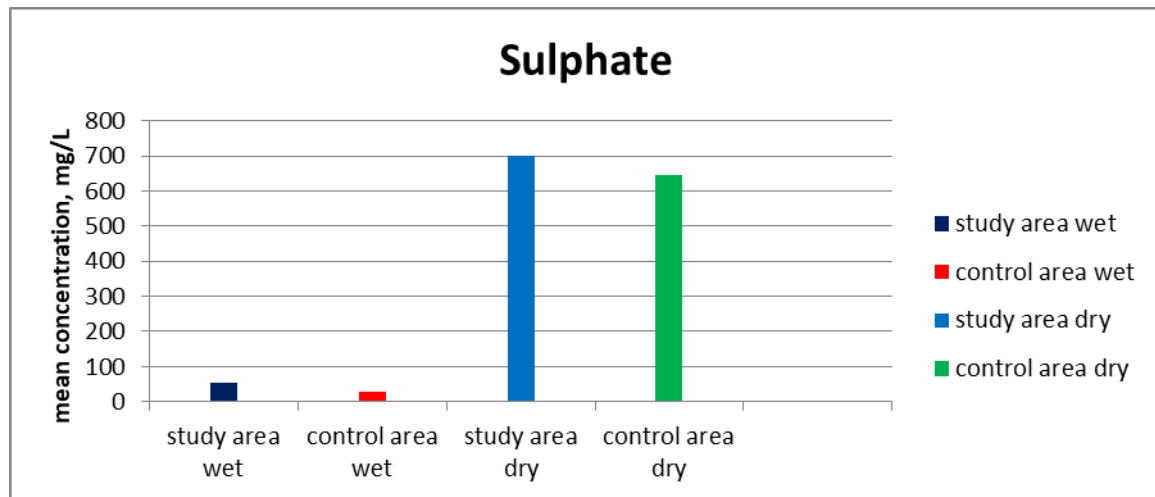


Fig. 7. Mean concentration of sulphate in the study area

### Nitrate

Nitrate values ranged from 0.01 – 0.04 mg/L and 0.001 – 0.07 mg/L in the study area with average nitrate values of  $0.02 \pm 0.01$  mg/L and  $0.01 \pm 0.02$  mg/L during the wet and dry seasons. Nitrate values obtained in the control area ranged from 0.01 – 0.05 mg/L and 0.001 – 0.006 mg/L with an average nitrate value of  $0.021 \pm 0.01$  mg/L and  $0.003 \pm 0.002$  mg/L in the wet and dry seasons. There was no significant statistical difference between values obtained in the sampling stations and the control stations ( $p > 0.05$ ) during the wet and dry seasons. The nitrate in surface water hardly exceeded 0.1 mg/L, but when influenced by human activity, Nitrate concentration can get up to 5 mg/L and over 200 mg/L in extreme cases [29]. Excess nitrate causes eutrophication which impedes the growth and survival of aquatic organisms due to the depletion of oxygen in the water body [17]. Wokoma and Njoku [25] reported a higher range of  $0.05 \pm 0.1$  – 7.75 mg/L from Lower Sombreiro River, Niger Delta.

### Calcium

Calcium concentration in the study area varied from 3.31 – 21.70 mg/L and 123.43 – 220.07 mg/L, with mean values of  $6.15 \pm 0.94$  mg/L and  $166 \pm 24.07$  mg/L in the wet and dry seasons. The control area had calcium concentrations in the range 6.05 – 34.51 mg/L and 118.11 – 217.95 mg/L, with a mean concentration of  $13.47 \pm 14.03$  mg/L and  $168 \pm 41.31$  mg/L during the wet and dry seasons. There was no statistical difference between calcium values observed in the study area and control area ( $p > 0.05$ ) during

the wet and dry seasons. Calcium occurs naturally in surface water [35]. In this study calcium was higher during the dry season (Fig. 8). The positive correlation observed between  $Mg^{2+}$ ,  $Cu^{2+}$ , Pb,  $K^{2+}$ , TDS, and  $Na^+$  EC, sulphate, Ni and calcium during the dry season infers that they may be from similar source such as weathering of rocks in the catchment area [35]. Evaporation caused by elevated temperature associated with the dry season may have also contributed to the elevated calcium recorded [36]. Akintoye et al. [37] reported higher mean values of 297.3 mg/L and 260.10 mg/L for the wet and dry seasons in a study conducted in Etche River, Niger Delta.

### Sodium

Sodium values observed in the study area ranged from 46.05 – 181 mg/L and 1954.56 – 2462.20 mg/L, with average value of  $93.39 \pm 9.29$  mg/L and  $2295 \pm 113$  mg/L in during the wet and dry seasons. Sodium concentration in the control area varied between 7.21 – 1001 mg/L and 1560 – 2719 mg/L with mean values of  $278.37 \pm 182$  mg/L and  $2165 \pm 475.16$  mg/L during the wet and dry seasons. Sodium values recorded in the study and control area were statistically different in the wet season ( $p < 0.05$ ). No statistical difference was found between sodium values obtained in the study area and control area ( $p > 0.05$ ) during the dry seasons. Higher sodium concentration was recorded in study area during the dry season (Fig. 9). Pearson correlation showed a strong positive correlation between sodium, electrical conductivity, total dissolved solids, Zn, and magnesium in the wet and dry seasons; this

indicates that similar factors may have contributed to their concentration in the water column. The high concentration of sodium observed in this study during the dry season may be attributed to seawater intrusion and weathering of rocks [38;39]. Seawater has high concentration of soluble salt [40]. A lower mean concentration of 716.0 mg/L was reported by Ukpatu et al. [39] from Okoro River Estuary in South-Eastern Nigeria.

### Magnesium

Magnesium concentration varied from 7.06 – 30.87 mg/L and 16.91 – 21.30 mg/L with mean values of  $14.71 \pm 1.28$  mg/L and  $19.86 \pm 0.98$  mg/L in the study area during the wet and dry seasons. The control stations had magnesium values in the range of 5.32 – 40 mg/L and 13.5 – 23.52 mg/L, with mean values of  $17.87 \pm 15.38$

mg/L and  $18.73 \pm 4.11$  mg/L during the wet and dry seasons. There was no significant statistical difference between magnesium concentration observed in the study area and control area ( $p > 0.005$ ) during the wet and dry seasons. Magnesium is naturally present in high concentrations in surface water; it is a component of chlorophyll and participates in enzymatic reactions [35]. The strong positive correlation between magnesium and iron in the wet season and with total dissolved solids (TDS) and electrical conductivity (EC) during the dry season suggest that similar factors may have contributed to their concentration in the water body. Magnesium in natural waters might be from organic matter and rocks that contain ferromagnesium minerals and carbonates in the catchment area [29]. A higher magnesium value of 71.22 mg/L (wet season) and 63.19 mg/L (dry season); were reported by Akintoye et al. [37].

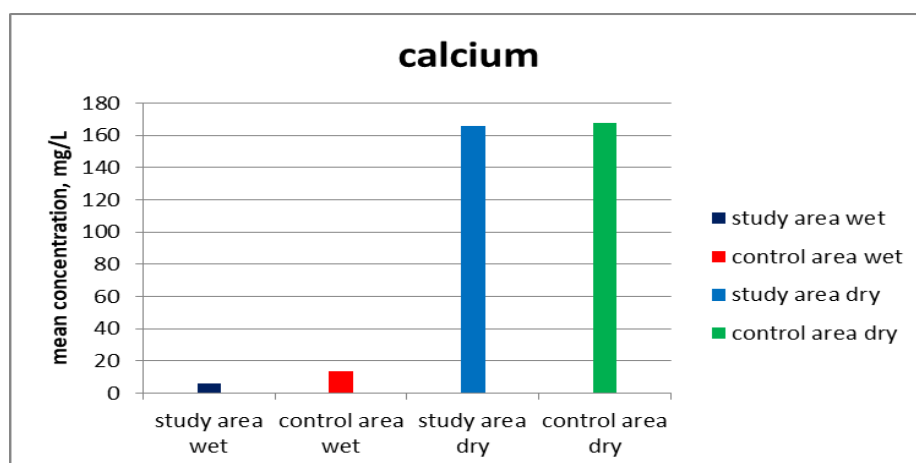


Fig. 8. Mean concentration of calcium from the study area

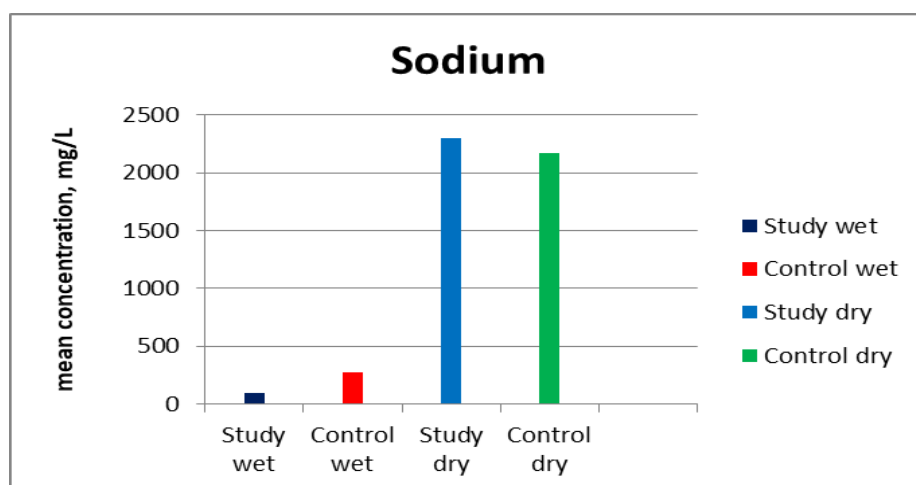
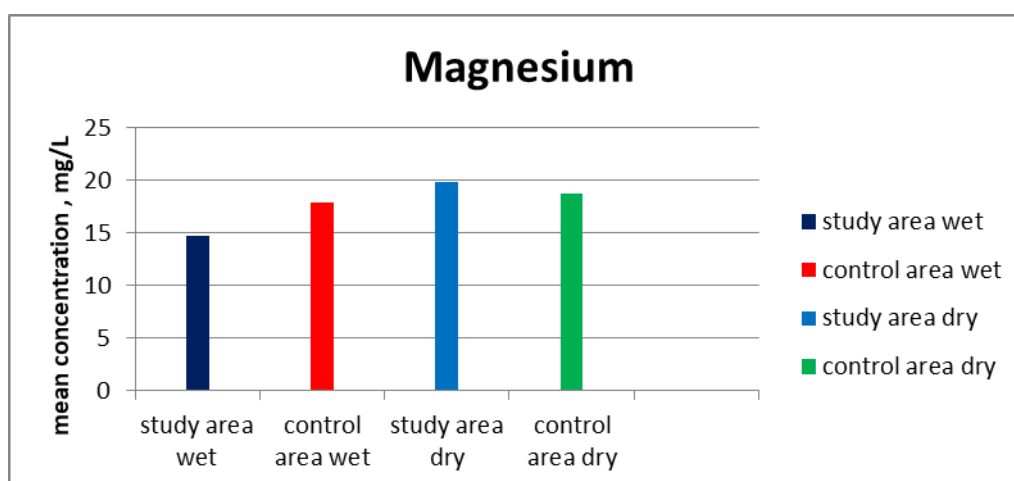


Fig. 9. Mean concentration of sodium in study area



**Fig. 10. Mean concentration of magnesium in the study**

### Heavy metals in surface water

#### Iron (Fe)

Iron (Fe) concentration in the study area ranged from 0.629 – 9.05 mg/L (wet season) and 0.29 – 5.59 mg/L (dry season) with mean values of  $1.92 \pm 0.39$  mg/L and  $2.09 \pm 1.23$  mg/L for the wet and dry seasons. Fe values ranged between 1.97 – 2.74 mg/L (wet season) 0.11 – 1.44 mg/L (dry season) with average values of  $2.52 \pm 0.37$  mg/L and  $1.09 \pm 0.65$  mg/L was recorded in the control stations. There was no significant statistical difference between Fe values obtained in sampling and control stations ( $p > 0.05$ ) during the wet and dry seasons. Olu et al. [41] reported similar values of  $1.94 \pm 0.49$  mg/L from surface water in the Soku Oil Field Area, Niger Delta. Lower values of 0.37 mg/L was reported by Numbere, [42] in a study conducted on surface water in some mangrove forest areas in the Niger Delta.

#### Zinc (Zn)

Zinc (Zn) concentration recorded in the study area ranged from 0.05 – 0.19 mg/L (wet season) and 0.51 – 1.57 mg/L (dry season) with mean concentrations of  $0.09 \pm 0.01$  mg/L and  $0.80 \pm 0.23$ . Zinc concentration in the control area was between 0.01 – 1.04 mg/L (wet season) and 0.57 – 1.02 (dry season) with average concentrations of  $0.28 \pm 0.50$  mg/L and  $0.82 \pm 0.22$  mg/L respectively. No significant statistical difference between Zn values obtained in the samplings and control points was observed ( $p > 0.05$ ) during the wet and dry seasons. Zinc in the surface water is usually in low concentration

because the controlling mineral in water bodies have low solubility [24]. Elevated concentration in water bodies is due to the impact of human activities. The zinc values observed in this study are comparable to low values in the range of 0.04 to 0.09 mg/L reported by Ngah, [20] in a study conducted in Elechi Creek in the Upper Bonny Estuary in Rivers State, Nigeria.

#### Chromium (Cr)

Chromium concentration in the study area ranged from 13.23 – 44.73 mg/L (wet season) with a mean concentration of  $28.56 \pm 1.86$  mg/L. The control area had Cr values in the range of 20.29 – 31.26 mg/L (wet season) with a mean concentration of  $23.26 \pm 5.34$  mg/L. Cr was below detection at  $< 0.006$  in the study area and control stations during the dry season. No significant statistical difference between the Cr concentrations recorded in the sampling and the control area ( $p > 0.05$ ). The elevated chromium level found in this study may be due to ashes from the combustion of coal and municipal waste [43]. Pearson correlation did not show any significant correlation between chromium and other measured physicochemical parameters in this study. Lower chromium of 0.172 mg/L was reported by Nwineewii and Edem [44] from a study on surface water in Niger Delta.

#### Lead (Pb)

Lead values obtained in the samples collected from the study area ranged from 0.51 – 1.53 mg/L (wet season) and 0.1 – 3.19 mg/L (dry season) with mean concentration of  $1.19 \pm 0.12$  mg/L and  $1.85 \pm 0.83$  mg/L respectively. In the

control area, lead was below detection limits at  $<0.01$  during the wet season; the dry season had a mean concentration of  $2.06 \pm 0.53$  mg/L. There was no statistical difference between lead values obtained in the sampling and control stations ( $p > 0.05$ ) during dry seasons. The elevated lead concentration observed in this study may be due to domestic waste washed into the River, leads used as weights for fishing nets, pipes in old jetties, and boats painted with lead-containing paints [41]. The findings in this study are comparable lead values of  $1.77 \pm 0.16$  mg/L,  $1.84 \pm 0.07$  mg/L, and  $1.83 \pm 0.1$  mg/L reported by Emuedo [45] from studies conducted in swamps situated in Nembe (Bayelsa state), Okrika (Rivers state) and Okpare (Delta states) respectively. Olu et al. [41] reported  $0.64 \pm 0.11$  mg/L from surface water in Soku Oil Field Area, Niger Delta. Madilonga et al. [46] reported the range of  $0.05 - 0.07$  mg/L from a study conducted in Mutangwi River, South Africa.

#### Copper (Cu)

Copper (Cu) values recorded in the study area ranged from  $0.05 - 2.17$  mg/L and  $0.03 - 0.19$  mg/L with average concentration of  $0.29 \pm 0.11$  mg/L and  $0.12 \pm 0.04$  mg/L during the wet and dry seasons respectively. Copper concentration in the control area varied from  $0.22 - 0.24$  mg/L and  $0.02 - 0.20$  mg/L with average concentration of  $0.23 \pm 0.007$  mg/L and  $0.13 \pm 0.08$  mg/L during the wet and dry seasons respectively. No statistical difference between copper concentration obtained in the sampling and control area was observed ( $p > 0.05$ ) during the wet and dry seasons. According to Boyd, [24], copper is usually present in low quantity because the controlling minerals in water bodies have low solubility. A high concentration in natural waters is an indication of anthropogenic influence. Consistent with the values measured in this present study, Imasuen and Egai [47] reported the range of  $< 0.001 - 0.48$  mg/L from surface water in Aguobiri community, Bayelsa state. Dan et al. (2014) had mean values of  $0.05 \pm 0.01$  and  $0.02 \pm 0.004$  in the wet and dry seasons from a study conducted in Qua – Iboe River Estuary and adjoining creeks, Nigeria.

#### Cadmium

Cadmium in the study and control area was below the detection limit at  $< 0.002$  during the wet season. During the dry season, Cadmium values in the study area ranged from  $0.01 - 0.68$  mg/L (dry season) with a mean concentration of

$0.12 \pm 0.20$  mg/L, while the control area had cadmium values in the range of  $0.09 - 0.12$  mg/L (dry season) with a mean concentration of  $0.11 \pm 0.01$  mg/L. No statistical difference between cadmium concentrations in the study and control area was obtained ( $p > 0.05$ ). Aghoghovwia et al. [10] reported cadmium values in the range of  $0.002 - 0.011$  mg/L with mean values of  $0.007$  mg/L from Nun River around Gbarantoru and Tombia Towns in Bayelsa State, Nigeria.

#### Nickel (Ni)

In this study, Nickel was below the detection limit at  $< 0.010$  during the wet season. The control area had a mean concentration of  $0.41 \pm 0.12$  mg/L (wet season). Nickel concentration in the ranges of  $0.18 - 1.24$  mg/L and  $0.17 - 1.13$  mg/L, with mean values of  $0.64 \pm 0.32$  mg/L and  $0.66 \pm 0.49$  mg/L, were measured in the study and control area (dry season). No statistical difference between Ni values was observed in the study and control area ( $p > 0.05$ ) during the wet and dry seasons. Wokoma and Njoku, [25] similar values in the range of  $0.008 \pm 0.004 - 0.596 \pm 0.01$  mg/L. Nwineewii and Edem, [44] reported mean values of  $0.441$  mg/L and  $1.338$  mg/L for wet and dry seasons were reported by Nwineewii and Edem, [44].

Mercury, Barium, benzene toluene ethylbenzene (BTEX) and Vanadium were below detection limits in the sampling and control area during the wet and dry seasons.

#### 4. CONCLUSION

This study examines the water quality of the Santa Barbara River. The results of the physical-chemical parameters revealed higher concentrations during the dry season compared to the wet season. The elevated concentration of dissolved solids, salinity, electrical conductivity, calcium, sulphate and sodium during the dry season may be due to seawater mixing with the River and increased concentration of ions in the water column caused by reduced rainfall. The levels of dissolved solids, salinity, electrical conductivity, and sodium values suggest a brackish water environment.

The heavy metal measured in this study revealed that high concentration of Lead and Chromium. Pearson correlation analysis did not show a strong positive correlation among the heavy metals in this study; this infers that they did not originate from the same source. A very high



concentration of lead and chromium observed in both seasons is suggestive that these heavy metals may bioaccumulate in the tissues of aquatic organisms after a long period. The high concentrations of Electrical conductivity, sodium, total dissolved solids, lead, chromium and sulphate observed in this study may be as a result of the burning of coal, combustion of fossil fuel, seawater intrusion, burning of garbage, use of lead as weight in fish nets, increased surface runoff, municipal waste discharge, and the use of paints containing Lead to paint boats. -Further investigation of the exceedances is recommended in order to profer impact mitigative measures of these pollutants to the environment.

### COMPETING INTERESTS

Authors have declared that no competing interests exist.

### REFERENCES

1. Olalekan RM, Ezugwu SC. AN assessment of trace elements in surface and ground water quality in the Ebocha-Obrikom oil and gas producing area of Rivers State, Nigeria. *International Journal of Scientific & Engineering Research*. 2017;7(8).
2. Mateo-Sagasta J, Zadeh SM, Turrall H. Water pollution from agriculture: A global review. The Food and Agricultural Organization of the United Nations; 2017.
3. Forstner U, Wittmann GTW. Metal pollution in the aquatic environment. Springer Berlin Heidelberg, New York; 1979.
4. Noman M, Feng W, Zhu G, Hossain MB, Chen Y, Zhang H, Sun J. Bioaccumulation and potential human health risks of metals in commercially important fishes and Shellfishes from Hangzhou Bay, China. *Scientific Report*. 2022;12:4634.
5. Nitasha K, Sanjiv T. Influence of natural and anthropogenic factors on surface and groundwater quality in rural and urban area. *Frontiers in Life Science*. 2015;8(1):23-39.
6. Ekubo AA, Abowei JFN. Review of some water quality management principles in culture fisheries. *Research Journal of Applied Sciences, Engineering and Technology*. 2011;3(2):1342-1357.
7. Etori OS, Nna PJ. Determination of physicochemical parameters of effluents at discharge points into the new Calabar River along Rumuolumeni axis, Port Harcourt, Rivers State, Niger Delta, Nigeria. *Journal of Environmental & Analytical Toxicology*. 2018;8:1–5.
8. Liu F, Liu J, Chen Q, Wang B, Cao Z. Pollution characteristics and ecological risk of polycyclic aromatic hydrocarbons (PAHs) in surface sediments of the southern part of the Haihe River system in China. *Chinese Science Bulletin*. 2013;7(58):3348–3356.
9. Sanjay KS. (Ed.). *Heavy Metals in Water: Presence, Removal and Safety*. UK: Royal Society of Chemistry; 2014.
10. Aghoghovwia OA, Miri FA, Izah SC. Impacts of anthropogenic activities on heavy metal levels in surface water of Nun River around Gbaratoru and Tombia Towns, Bayelsa State, Nigeria. *Annals of Ecology and Environmental Science*. 2018;2(2):1-8.
11. Nwachoko N, Jack GT, Dume BB. The impact of oil exploration activities on soil, water and shrimps of Maa-Or Gbor in Korokoro Community, Rivers State, Nigeria. *Chemical Science International Journal*. 2021;30(5):44-50.
12. Collins NCU, Jurgan E. Negative impact of oil exploration on biodiversity management in Niger Delta area of Nigeria. *Impact Assessment and Project Appraisal*. 2008;26(2):139-147.
13. Ordinioha B, Brisibe S. The human health implications of crude oil spills in the Niger delta, Nigeria: An interpretation of published studies. *Nigerian Medical Journal*. 2013;1(54):1–10.
14. APHA. American Public Health Association/American Water Works Association/Water Environment Federation (2012). *Standard Methods for the Examination of Water and Wastewater*. 22nd Edition, Washington DC, USA. Arafat R, Ishrat J, Yeasmi; 2012.
15. Shroff P, Vashi RT, Champa neri VA, Patel KK. Correlation study among water quality parameters of groundwater of Valsad Districts of South Gujarat. *Journal of fundamental Applied Science*. 2015;151:1–10.
16. Heydarnejad MS. Survival and growth of Common Carp (*Cyprinus carpio* L.) exposed to different water pH levels. *Turkish Journal of Veterinary and Animal Science*. 2012;36(3):245-249.
17. Lawrence OA, Beremboba TB, Samuel AW. Microbiological and physicochemical properties of Krakrama (Brackish) water in

- Rivers State, Niger Delta, Nigeria. *Acta Scientific Microbiology*. 2020;3(5):123-132.
18. Taylor M, Elliot HA, Navitsky LO. Relationship between Total Dissolved Solids and Electric Conductivity. *Water Science Technology*. 2018;1-7.
  19. Etori OS, Idomo BSK, Chioma F. Physicochemical characteristics of surface water and sediments of Silver River, Southern Ijaw, Bayelsa State, Niger Delta, Nigeria. *American Journal of Environment Science and Engineering*. 2019;3(2):39-46.
  20. Ngah AS, Braide S, Dike CC. Physico-chemistry of Elechi Creek in the Upper Bonny Estuary, Rivers State, Nigeria. *Journal of Geoscience and Environment Protection*. 2017;5:181-197.
  21. Ustaoglu F, Tepe Y. Water quality and sediment contamination assessment of Pazarsuyu Stream, Turkey using Multivariate Statistical Methods and pollution indicators. *International Soil and Water Conservation Research*. 2019;7:47-56.
  22. Peter W. *Treatise on Water Science*. 1ST Edition. Elsevier Science; 2011..
  23. Woke GN, Umesi. Comparative study of sediments samples from Brackish and fresh water in the Lower Niger Delta, Nigeria. *International Journal of Research in Agriculture and Forestry*. 2018;5(5):1-7.
  24. Boyd TJ, Montgomery MT, Steele JK, Pohlman JW, Reatherford SR, Spargo BJ, Smith DC. Dissolved oxygen saturation control PAH biodegradation in freshwater estuary sediments. *Microbiology Ecology*. 2005;49:226-235.
  25. Wokoma OAF, Njoku KU. Physical and chemical characteristics of the Lower Sombreiro River, Niger Delta, Nigeria. *Applied Science Report*. 2017;20(1):11-16.
  26. Nithunya LN, Maifadi S, Mamba BB, Verliefe AR, Mhlanga S. Spectroscopic determination of water salinity in Brackish surface water in Nandoni Dam, at Vhembe District, Limpopo Province, South Africa. *Multidisciplinary Digital Publishing Institute*. 2018;1-13.
  27. Ezekiel NE, Hart AI, Abowei FN. The Physical and chemical condition of Sombreiro River, Niger Delta, Nigeria. *Research Journal of Environmental and Earth Sciences*. 2011;3(4):327-340.
  28. Ioryue IS, Wuana RA, Augustine AU. Seasonal variation in water quality parameters of river Mkomon Kwande Local Government Area, Nigeria. *International Journal of Recent Research in Physics and Chemical Sciences*. 2018;5(1):42-62.
  29. Chapman D. (Ed.). *Water quality assessment: A Guide to the Use of Biota, Sediment and water in Environmental monitoring*. 2ND Edition. CRC Press; 1996.
  30. Seiyaboh EI, Angaye TCN, Okogbue BC. Physicochemical quality assessment of River Orashi in Eastern Niger Delta of Nigeria. *Journal of Environmental Treatment Technique*. 2016;4(4):143-148.
  31. Davies OA, Abolude DS. Polycyclic Aromatic Hydrocarbons (PAHs) of surface water from Oburun Lake, Niger Delta, Nigeria. *Applied Science Reports*. 2016;13(1):20-24.
  32. Nwineewii JD, Abiye CM. Polycyclic Aromatic Hydrocarbons (PAHs) in surface water and their toxicological effects in some creeks of South East Rivers State (Niger Delta) Nigeria. *Journal of Environmental Science, Toxicology and Food Technology*. 2015;12(9):27-30.
  33. Huiwei W, Qianqian Z. Research advances in identifying sulfate contamination sources of water environment by using stable isotopes. *International Journal of Environmental Research and Public Health*. 2019;16:1-13.
  34. Vincent-Akpua IJ, Tylerb AN, Wilsonb C, Mackinnonc G. Assessment of physico-chemical properties and metal contents of water and sediments of Bodo Creek, Niger Delta, Nigeria. *Toxicological and Environmental Chemistry*. 2015;2(97):135-144.
  35. Potasznik A, Szymczyk S. Magnesium and Calcium concentration in the surface water and bottom deposits of A River – Lake System. *Journal of Elementology*. 2015;20(3):677-692.
  36. Ojok W, Wasswa J, Ntambi E. Assessment of seasonal variation in water quality in river Rwizi Using Multivariate Statistical Techniques, Mbarara Municipality, Uganda. *Journal of Water Resource and Protection*. 2017;9:83-97.
  37. Akintoye OA, Obi CN, Etim OA, Olorundami T, Ukata SU, Edet HU. Seasonal variation in the physico-chemical characteristics of surface water in EtcheRiver, Niger Delta Area of Nigeria. *Journal of Environmental Science, Toxicology and Food Technology*.

- 2014;7(8):1-7.
38. Nganje T, Hursthouse A, Aniekan E, Stirling D, Adamu CI. Hydrochemistry of surface water and groundwater in the shale bedrock, Cross River Basin and Niger Delta Region, Nigeria. *Applied Water Science*. 2017;7:961–985.
  39. Ukpatu J, Udoinyang E, Etim L. Seasonality, collinearity and quality assessment of the physicochemical properties of Okoro River Estuary, South Eastern Nigeria. *Journal of Scientific Research and Reports*. 2018;19(5):1-15.
  40. Napaporn P, Kiattisak S, Yutthana P. Consequence of seawater intrusion on soil properties in agricultural areas of Nonthaburi Province, Thailand. *Applied Environmental Research*. 2021;43(2):77-92.
  41. Olu U, Ugbomeh AP, Bob Manuel KNO, Ekweozor IKE. Levels of selected heavy metals in water and sediment of the Soku Oil field area of the Niger Delta, Nigeria. *Journal of Aquatic Pollution and Toxicology*. 2019;1(3):1-9.
  42. Numbere AO. Concentrations of Iron and other physico-chemical parameters in ground and surface water in some mangrove forest areas in the Niger Delta, Nigeria. *African Journal of Applied Zoology & Environmental Biology*. 2017;19:1–12.
  43. Tumolo M, Ancona V, De Paola D, Losacco D, Campanale C, Massarelli C, Uricchio VF. Chromium pollution in European water, sources, health risk, and remediation strategies: An overview. *International Journal of Environmental Research And public Health*. 2020;17(15):5438.
  44. Nwineewii JD, Edem CA. Determination and toxicological effects of some heavy metals in surface water from the Niger Delta, Nigeria. *IOSR Journal of Applied Chemistry*. 2014;5(7):32-36.
  45. Emuedo OA, Anoliefo GO, Emuedo CO. Oil pollution and water quality in the Niger Delta: Implications for the sustainability of the mangrove ecosystem. *Global Journal of Human-Social Science*. 2014;14(6): 1-9.
  46. Madilonga RT, Edokpayi TN, Volenzo ET, Durowoji O. Water quality assessment and evaluation of human health risk in Mutangwi River, Limpopo Province, Soith Africa. *International Journal of Environmental Research and Public Health*. 2021;18:1-16.
  47. Imasuen OI, Agai AO. Concentration and environmental implication of heavy metals in surface water in Aguobiri Community, Southern Ijaw Local Government Area, Bayelsa, Nigeria. *Journal of Applied Science and Environmental Mangement*. 2013;17(4):467-472.

© 2022 Okoro et al.; This is an Open Access article distributed under the terms of the Creative Commons Attribution License (<http://creativecommons.org/licenses/by/4.0>), which permits unrestricted use, distribution, and reproduction in any medium, provided the original work is properly cited.

*Peer-review history:*

*The peer review history for this paper can be accessed here:*  
<https://www.sdiarticle5.com/review-history/90457>