

RESEARCH ARTICLE

Fine scale behaviour and time-budget in the cryptic ectotherm European pond turtle *Emys orbicularis*

Théo Marchand¹, Anne-Sophie Le Gal¹, Jean-Yves Georges^{1,2*}¹ Université de Strasbourg, CNRS, IPHC, UMR 7178, Strasbourg, France, ² Research Station Petite Camargue Alsacienne, Saint-Louis, France* jean-yves.georges@iphc.cnrs.fr

Abstract

For ectotherms, behaviour and associated energetic costs are directly related to thermal conditions. In the present context of global change, estimating time-budget for these species is relevant to assess and predict their capacity to adapt to near future. We tested the hypothesis that in ectotherms where reproduction is highly energy consuming, energy expenditure should vary throughout the breeding season with a maximum around nesting events. To test this hypothesis, we assessed the fine-scale behaviour, time-budget and estimated energetic costs in eight adult female European pond turtles *Emys orbicularis* equipped with data-loggers recording ambient temperature, pressure, light and the animals' 3-axis acceleration. Deployments occurred over four months throughout the nesting season 2017 in semi-natural captive conditions in Alsace, France. All study turtles showed a clear daily pattern over the 24h cycle, with four distinct phases (referred to as Night, Morning, Midday and Evening), associated with different behaviours and activity levels. Before oviposition, turtles were mostly active during Morning, and activity was positively driven by ambient temperature. Activity levels doubled during the nesting period, mostly due to the increased activity in the Evening, when nesting events occurred. Throughout the active season, basking occurrence at Midday was related to air temperature but cloud coverage was an even more important factor. Our results are a first step in predicting the seasonal time and energy budgets of the European pond turtle, and demonstrate the usefulness of animal-borne accelerometers to study free living freshwater turtles over extended periods of time.

OPEN ACCESS

Citation: Marchand T, Le Gal A-S, Georges J-Y (2021) Fine scale behaviour and time-budget in the cryptic ectotherm European pond turtle *Emys orbicularis*. PLoS ONE 16(10): e0256549. <https://doi.org/10.1371/journal.pone.0256549>

Editor: Ulrich Joger, State Museum of Natural History, GERMANY

Received: March 8, 2021

Accepted: August 10, 2021

Published: October 15, 2021

Copyright: © 2021 Marchand et al. This is an open access article distributed under the terms of the [Creative Commons Attribution License](https://creativecommons.org/licenses/by/4.0/), which permits unrestricted use, distribution, and reproduction in any medium, provided the original author and source are credited.

Data Availability Statement: Should the study be published, data will be archived in Dryad repository and access information will be sent to PLOS ONE.

Funding: This study is part of the research project EMYS@lsace led by JYG who received funds from Conseil Départemental du Bas-Rhin (<http://www.bas-rhin.fr/>) and Centre National de la Recherche Scientifique (<http://www.cnrs.fr/>) through the Site d'Etude en Ecologie Globale du Woerr. The funders had no role in study design, data collection and analysis, decision to publish, or preparation of the manuscript.

Introduction

Human induced rapid environmental changes [1] include climate change, habitat fragmentation and loss, pollution, species invasions and extinctions. These changes and especially global warming are expected to have a more direct impact on ectotherms than on endotherms, as their physiology acutely depends on ambient temperature [2]. Temperature changes have been reported to have diverse effects on both behaviour and physiology of insects, with contrasted consequences on populations, depending on the species and conditions (e.g. [3, 4]).

Competing interests: The authors have declared that no competing interests exist.

Abbreviations: VeDBA, Vectorial Dynamic Body Acceleration; T_{AirField} , Temperature of air, recorded on the field; $T_{\text{WaterSurface}}$, $T_{\text{Water20cm}}$, $T_{\text{WaterBottom}}$, Water Temperature recorded at the surface, 20 cm below the surface, and at the bottom of the pond, respectively; $T_{\text{AirMulhouse}}$, Temperature of air recorded in Mulhouse airport, by Météo France; T_{WACU} , P_{WACU} , L_{WACU} , Temperature, Pressure and Light recorded by dataloggers attached on the carapace of turtles; these are not internal measurements; g, grams; m, meters; °C, Celsius degrees; min, minutes; s, seconds; sd, standard deviation.

Consequences for fish have been most investigated, with changes in water temperature affecting heart rate, activity and thermoregulation (e.g. [5]). In this context, Sauropsids (reptiles) have been less studied (but see [6, 7]) and more particularly marine and freshwater turtles. This latter gap in freshwater turtles may be partly due to the fact that terrapins are challenging to monitor because of their cryptic ecology and their small body size that limits the use of animal-borne automatic devices.

Estimating time-budget and energy expenditure in free living animals is a key step to understand the physiology and ecology of species, their function within their ecosystem and, ultimately, their capacity to adapt to the present and future environmental changes [8]. To achieve these goals, animal-borne data-loggers have proven to be appropriate tools because they can record biological and environmental parameters at frequencies compatible with animals' behaviour. Accelerometers can provide high frequency, high resolution information on individual posture, behaviour, and activity patterns of animals [8, 9]. Furthermore, activity metrics recorded with these devices (e.g. ODBA/PDBA) can serve as a proxy of animal energy expenditure associated to specific behaviours [10–12].

In turtles, reproduction is energetically costly, as adult females come ashore to lay clutches of numerous eggs that fill the entire maternal body cavity at maturation [13–15]. Because of such volume constraints, female turtles are most likely to fast during the nesting season [16]. The European pond turtle, *Emys orbicularis* (Linnaeus, 1758), is a small-sized freshwater turtle that occurs throughout Europe, even reaching the Middle East [17]. It has been reported to show a latitudinal gradient in its reproductive effort [18], with potential double clutches under the warm Mediterranean climate [19]. Its basic behaviour and activity have been extensively investigated (mainly basking, during which animals exit water to increase body temperature via solar radiation [20–22], and displacements [23, 24]). Yet, the fine scale daily and seasonal behaviour patterns are almost unknown in the European pond turtle as in most freshwater turtles.

Given the above-mentioned ectothermic physiology and constraints related to reproduction both in terms of time and energy, the European pond turtle has been shown to adjust its behaviour and time-budget according to thermal conditions. Yet the actual changes in behaviour and energy expenditures throughout long periods of time, such as the entire nesting season, have not been reported yet. Using accelerometers combined with sensors measuring ambient temperature, pressure, and light, we investigated the fine scale behaviour and associated activity patterns of adult female European pond turtles living freely in semi-natural captive conditions in relation to meteorological conditions throughout the nesting season in Alsace, NE France. We predicted that activity patterns will be lower during the night, when compared with the day, due to diurnal fluctuations in air temperature, rainfall and/or cloud coverage, yet with maximum daily activity patterns around oviposition.

Materials and methods

Study area

The study was carried out in the conservatory captive breeding facility located at the research station of Petite Camargue Alsacienne (St Louis, Alsace, France; 47.63°N | 7.54°E), between April 13 and August 29, 2017. The facility consists of a 1200m² outdoor enclosure, which includes one 250m² artificial pond (< 2m depth) connected to the underground water table and surrounded by natural vegetation. It also contains an artificial mound facing South, where females can crawl for egg deposition. There, 22 (15 female and 7 male) pond turtles (*Emys orbicularis orbicularis*, captured in 2004 as adults of unknown age from a natural population in La Brenne, France) are kept as part of a conservation program, aiming at reintroducing the

species in Alsace, NE of France [25]. Therefore, nesting activity is monitored from May to July by daily observations (from 6pm to 11pm) for recording individuals laying (or attempting to lay) eggs [26].

Subjects and tools

This study focused on eight adult females European pond turtles (body mass: 749 ± 171 g [mean \pm standard deviation], carapace length 155 ± 14 mm) equipped with dataloggers (hereafter referred as WACU) developed at IPHC (<https://iphc.cnrs.fr>). WACUs are miniaturized autonomous recorders ($21 \times 13 \times 4$ mm, 7 g including batteries and potting) measuring temperature (T_{WACU}), pressure (P_{WACU}) and light (L_{WACU}) at 1 Hz and 3D acceleration at 10 Hz over 4 to 6 months (see general specifications for WACU on <http://iphc.cnrs.fr/-MIBE-.html>). The mass ratio between dataloggers and turtles ($<1\%$) suggests that such deployments cause limited, if any, disturbance to the turtles.

WACUs were fixed directly on the top of the turtle carapace using fast-setting epoxy (Araldite) after epibiontes (organisms living on the carapace) and dead tissues were removed by successive and alternating applications of acetone and sand paper (sand grain 80). The entire attachment procedure lasted between 10 and 20 minutes depending on glue setting. Turtles were released ~ 1 hour after WACU attachment. Before attachment to a turtle and after retrieval, each WACU was rotated over all angles at exact GPS times, used as time stamps, to assess and correct the potential drift of their internal Real Time Clock (RTC) throughout the duration of deployment. All times are given as UTC (Universal Time Coordinated), while local time was UTC+2.

In addition to data recorded by the WACUs, air and water temperatures were recorded at the study site using Tinytags data-loggers (Gemini Data Loggers, Chichester, UK, <https://www.gemindataloggers.com/fr/>). These loggers recorded temperature every 10 minutes: (1) in the air ($T_{AirField}$), (2) at three different depths within the water column of the pond, using three devices that were suspended at a vertical rope: (a) at the surface ($T_{WaterSurface}$), (b) at 20 cm depth ($T_{Water20cm}$), and (c) at the bottom of the pond ($T_{WaterBottom}$). Finally, meteorological records from the weather station of the Bale-Mulhouse Airport (Météo-France station 07299, GPS position: $47.61^\circ N$ | $7.51^\circ E$, 263m above sea level, 3km West from the field site) were obtained from the national weather service (<https://www.meteofrance.fr/>): this concerned (3) air temperature ($T_{AirMulhouse}$), cloud cover, and rain fall, recorded every 3 hours. There was a significant positive correlation between air temperature at the study site and at the airport ($T_{AirField} [^\circ C] = 0.053[\pm 0.135] + 1.014[\pm 0.007] \times T_{AirMulhouse} [^\circ C]$, $R^2 = 0.865$, $p < 10^{-12}$, $n = 3324$ hourly records). Sunrise and sunset times for the nearby city of Mulhouse (Alsace, NE France) were downloaded from <https://www.timeanddate.com>.

Animal handling was approved by the French Ministry for National Education, Higher Education and Research and by the Ethical Committee for Animal Experimentation (CRE-MEAS, CEEA 35, Strasbourg, APAFIS#649–201505121120811_v1).

Data handling

Data were handled, pre-treated, visualized and analysed using Matlab (version 8.6.0.267246 [R2015b] August 20, 2015). Real Time Clock (RTC) drift was 21.30 ± 2.72 min over 141 days of functioning, range [18.40–27.10 min, $n = 8$ WACUs]. Recorded pressure (P_{WACU}) was linearly transformed to indicate the depth under water surface (i.e. 0 at the surface, 0.1 bar at 1m depth). The 3-axis acceleration signal was decomposed using a low-pass filter (filtfilt Matlab function) following [8]. We used a 2 second window for the low pass filter to minimize variance of the vectorial sum of the static components. For each axis, the low-pass filter extracted

the static (due to gravity) and dynamic (due to a change in velocity) components of the acceleration signal [8]. The Vectorial Dynamic Body Acceleration (VeDBA, in m.s^{-2}) was calculated as the vectorial sum of the absolute values of the dynamic component of the three axes: in other words, VeDBA is the total acceleration due to changes in animal velocity. When VeDBA is integrated over a certain time window, the result (in m.s^{-1}) can be used as a proxy of the animal's locomotor activity. Angles of the anterior-posterior (pitch) and left-right (roll) axes in relation to the horizontal axis were computed from the static component of acceleration.

Identification and analysis of daily patterns

As a first step, T_{WACU} , P_{WACU} and L_{WACU} were used to investigate potential changes in associated patterns across the 24-hour cycle. This permitted to divide a 24h cycle in four phases (Fig 1):

1. "Night" was characterized by low light values ($\text{Median}[L_{WACU}] < 1000$ Lux calculated over a 1 min window) and highly consistent temperature and pressure readings ($\text{sd}[T_{WACU}] < 1$ & $\text{sd}[P_{WACU}] < 5e^{-3}$ computed over a 1 min window). During Night, "Breathing" bouts could be identified by sudden changes in P_{WACU} . Pressure spikes within Breathing bouts were defined as "Inhalation" events (Fig 1B).
2. "Midday" was characterized by high light values ($\text{Mean}[L_{WACU}] > 20000$ Lux over a 1 min window) and increased temperature values, i.e. several degrees higher than the lowest temperature of the 24-h-period. During Midday, "Basking" events were defined as periods where T_{WACU} continuously increased over time. Sudden drops in T_{WACU} or sudden increases in pressure were interpreted as "Diving" events.
3. "Morning" was defined as the period between Night and Midday.
4. "Evening" was defined as the period between Midday and Night.

To detect egg-laying events, we constructed an algorithm that could detect all laying events visually observed in the field. This algorithm was based on the angles extracted from the static component of acceleration. Egg-laying events were characterized by $\text{variance}[\text{roll}] < 50$ and $\text{variance}[\text{pitch}] > 120$ or $\text{variance}[\text{roll}] < 10$ and $\text{variance}[\text{pitch}] > 40$ computed over a 2 min window that fitted with the movements of rear legs of turtles digging their nest.

Apart from Night phase, P_{WACU} could not be used in all cases for depth assessment because of erratic pressure signal during active behaviours occurring the rest of the day (see Discussion below). To assess the depth of the animals in the water column (above, at the surface, at 20cm or more below the surface), we thus used correlations of T_{WACU} with all four temperatures recorded in the field with Tinytags. We reasoned that the best correlation between T_{WACU} and the temperature of the surrounding environment (Intercept ≈ 0 , slope ≈ 1 , $R^2 \approx 1$) would indicate at best the vertical position (in air or water) of the turtle (Fig 1A).

Statistical models were constructed in R (R version 3.2.4 [2016-03-10]), using the packages *nlme* for linear mixed models, and *lme4* for GLMMs (Generalized Linear Mixed Models [27, 28]). To model the probability of basking behaviour (i.e. during Midday), we ran a GLMM with a binomial distribution of Midday phases as variable. Fixed factors were environmental parameters (temperature, rain fall, cloud coverage, daylength at Mulhouse weather station) that were preliminarily centred and reduced (mean = 0 and variance = 1). Turtle ID was used as a random variable to deal with pseudo replication in the dataset [29–31]. Using a stepwise backward analysis based on AIC, we selected the most parsimonious model. The slope was considered as a proxy for the weight of the effect.

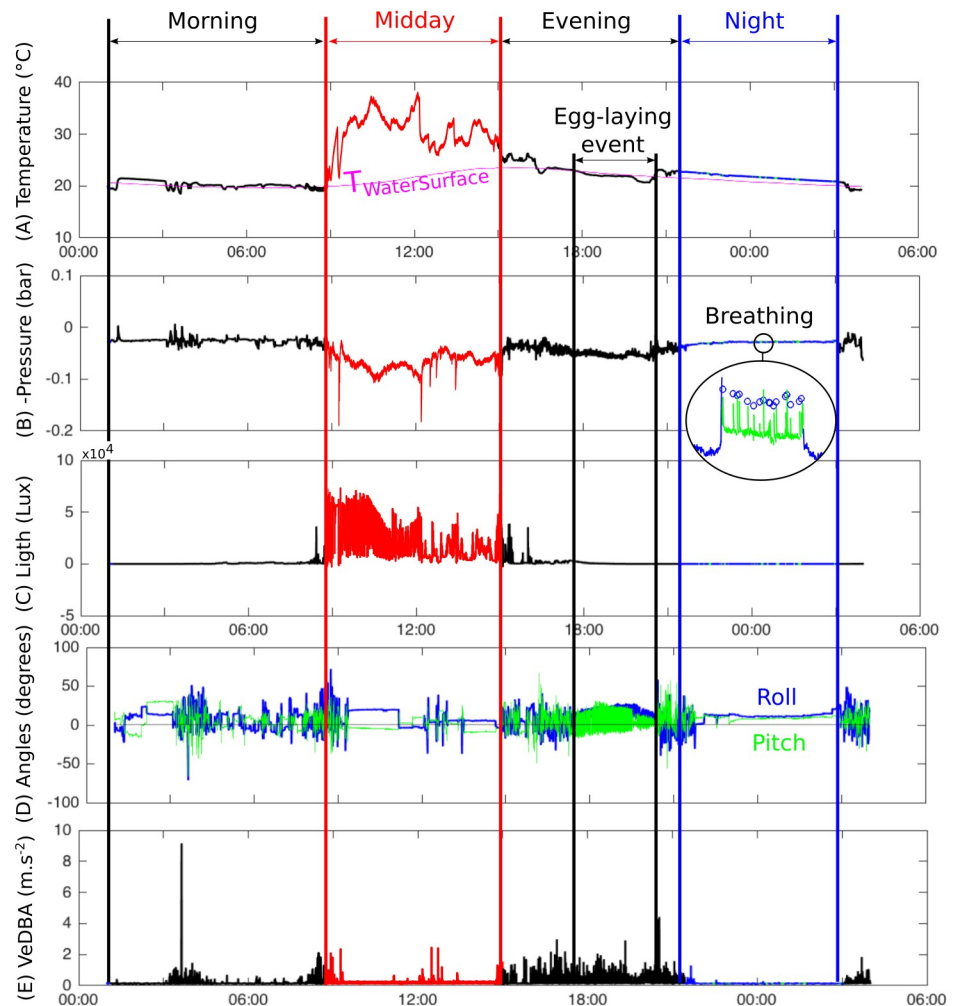


Fig 1. Example of a 24-h record collected by a WACU deployed on an adult female European pond turtle *Emys orbicularis* (individual 8, on May 31, 2017, UTC time) at Petite Camargue Alsacienne, Alsace, France, from which daily schedule could be estimated as Morning, Midday, Evening and Night bouts. From top to bottom: (A) Temperature: $T_{WaterSurface}$ in pink and T_{WACU} in black for Morning and Evening, in red for Midday including basking, in blue for Night and in green for breath bouts during Night. (B) Pressure (reversed vertical axis) showing a breath bout in details, with blue circles corresponding to inhalation events. (C) Ambient Light (see T_{WACU} for colours). (D) Angles (in degrees) extracted from static components of acceleration from which egg-laying events can be inferred. (E) VeDBA from dynamic component of acceleration computed on a 1 min window.

<https://doi.org/10.1371/journal.pone.0256549.g001>

Results

All eight WACUs provided complete records during their deployment, leading to 137 days of data for each individual, i.e. 1096 complete days in total.

Daily activity patterns

(1) Over the entire records, Night phases lasted on average 9.3 ± 3.4 hours. Each Night phase contained on average 23.2 ± 14.3 Breathing bouts. One single Breathing bout lasted on average 162 ± 103 s and consisted of 9.6 ± 7.2 inhalation events (i.e. 222.0 ± 158.9 inhalation events per Night) (Table 1). Time elapsed between two successive Breathing bouts was 22.5 ± 76.9 min (90%-quantile = 40.5 min, $n = 25550$).

Table 1. Summary of individual biometrics, nesting event characteristics, daily bout durations and associated VeDBA in 8 adult female European pond turtles, *Emys orbicularis*, monitored at Petite Camargue Alsacienne, Alsace, France, from 14 April to 28 August, 2017.

Turtle ID #	1	2	3	4	5	6	7	8	Total	
Body mass (g)	549	551	670	730	726	790	962	1015	749±171	
Carapace length (mm)	135	138	150	155	161	155	169	177	155±14	
Nb of nesting attempts/events detected by accelerometry	6	5	1	4	3	3	1	3	3.25±1.75 (n = 26)	
Dates of nesting *detected by accelerometry	08 June	11 June	31 May	02 June	3 June* and 25 June*	02 June	02 June	31 May	[31 May-25 June]	
Egg-laying events	Mean Duration (h)	1.72	1.11	1.00	0.98	1.41	0.70	1.00	1.20	1.22±0.63
	Mean Hourly VeDBA (m/s)	980.7	1098.3	914.2	1203.9	1251.5	1473.6	1118.2	833.7	1111.7±224.6
Morning	Duration (h)	6.14±3.52	6.63±4.35	5.80±3.96	7.41±4.06	6.30±4.02	6.94±4.46	6.59±4.17	6.08±3.34	6.49±4.02
	Hourly VeDBA (m/s)	607.1 ±142.0	645.8 ±143.7	698.3 ±135.1	635.4 ±155.1	669.3 ±138.8	600.4 ±122.6	577.3±99.5	555.7±87.4	623.8±137.0
	n	136	137	137	136	136	137	135	136	1090
Midday	Duration (h)	4.99±2.42	5.33±2.14	5.83±2.57	5.17±2.41	5.74±2.58	4.34±2.61	5.14±2.58	4.33±2.56	5.11±2.53
	Hourly VeDBA (m/s)	535.5 ±100.5	577.9 ±135.4	549.4 ±105.1	562.7 ±140.7	562.4 ±127.1	527.6 ±100.4	509.5±84.3	526.0±85.3	543.6±113.1
	n	117	118	121	114	119	115	125	120	949
Evening	Duration (h)	4.07±2.22	3.91±1.67	3.96±2.05	4.35±1.71	4.10±2.16	4.69±2.35	5.57±3.52	4.01±2.03	4.34±2.34
	Hourly VeDBA (m/s)	578.0 ±168.7	635.3 ±176.2	595.2 ±135.0	603.1 ±149.2	591.7 ±141.4	547.9 ±133.3	541.6 ±106.2	527.5 ±113.6	577.2±145.4
	n	117	118	121	114	119	115	124	120	948
Night	Duration (h)	10.09±3.47	9.33±3.15	9.49±3.32	8.66±2.96	9.14±3.47	9.47±3.52	7.77±3.42	10.58±3.4	9.32±3.43
	Hourly VeDBA (m/s)	417.6±6.3	412.1±8.6	444.7±8.7	408.8±19.4	412.0±9.1	417.3±7.1	430.6±11.5	430.0±7.1	421.6±15.6
	n	138	138	138	138	138	137	137	138	1102
Basking	Duration (h)	1.63±0.86	1.78±0.89	1.83±0.89	1.74±0.96	1.73±0.88	1.50±1.04	1.63±0.89	1.53±0.97	1.67±0.93
	n	117	118	121	114	119	115	125	120	949

Values are means ± sd.; n represents the number of events for each variable.

<https://doi.org/10.1371/journal.pone.0256549.t001>

We manually checked three series of 24 continuous hours for four individuals (i.e. 12 complete 24-h cycles), chosen at random, to estimate the efficacy of our algorithm. In total, 262 Breathing bouts were correctly detected by the algorithm, 38 were false positives (12.7%) and 31 were false negatives (10.6%). 2795 Inhalation events were correctly detected by the algorithm, 484 were false positives (14.8%) and 425 were false negatives (13.2%). For both events, the number of false positives was close to number of false negatives. Therefore, we are confident that our algorithm estimated the actual number of Breathing bouts fairly accurately. Yet, the time required to manually analyse these 12 random 24-h cycles was 20,000 times greater than that needed when using the algorithm.

Mean P_{WACU} [during Night phase] was 0.037 ± 0.016 bar, giving a mean depth at the top of the carapace of 37 ± 16 cm below the surface at night. Yet the temperature on contact with turtles (T_{WACU}) during Night was best correlated with water temperature at the surface (T_{WACU} [during Night bouts] = $0.53[\pm 10^{-3}] + 0.99[\pm < 10^{-3}] \times T_{WaterSurface}$ [during Night bouts], $R^2 = 0.97$, $P < 10^{-12}$, $n = 37e^6$), suggesting that turtles spent their night submerged close to the surface (see Fig 1A for example). This is confirmed by the calculation of the mean difference between the pressure recorded just before a breathing event, and the minimum pressure during a breathing event, that was 0.0044 ± 0.003 bar, indicating that at night, turtles rose on average 4.4 ± 3.1 cm out of the water when breathing.

(2) Midday phases did not occur every time: over the 1096 recorded 24h-cycles (one for each day and each turtle), 142 showed no Midday phase (Table 1). 78 of these events were common to at least seven of the eight turtles and concerned 10 given days. GLMM analysis showed that the probability of Midday phase to occur was best explained by cloud coverage (slope = $-2.52[\pm 0.28]$, z -test = -8.9 , $p < 2e-16$), before DayLength (slope = $0.75[\pm 0.12]$, z -test = 6.1 , $p = 1.e-9$) and rain fall (slope = $-0.35[\pm 0.08]$, z -test = -4.3 , $p = 1.e-5$).

(3) Morning phases were characterized by a specific moment of the day, when T_{WACU} was close to $T_{WaterSurface}$ ($R^2 = 0.925$), yet with highly variable Pressure readings (unlike Nights) (Fig 1). This indicates that turtles were spending their Morning submerged close to the surface, while being relatively active (as confirmed by the acceleration data, see below, Table 1).

(4) Evening phases were associated with slow linear decrease in T_{WACU} , yet, with variable P_{WACU} (Table 1).

Changes in activity levels throughout the nesting period

VeDBA was used to assess activity levels and showed three main periods relative to the egg-laying date. Daily VeDBA showed a large increase around the egg-laying date (Fig 2A), mostly due to increased Evening activity (Fig 2D), when egg-laying occurred. Before the egg-laying date, daily VeDBA was best explained by VeDBA computed during Morning phase ($R^2 = 0.61$, $p < 2e-16$) compared to the other phases. More precisely, daily VeDBA was best correlated with hourly VeDBA computed within the [4am-10am, UTC] window of the day ($R^2 = 0.76$, $p < 2e-16$). Before the egg-laying date, daily VeDBA was also positively correlated to $T_{AirField}$ ($R^2 = 0.33$, $p < 2e-16$) (Fig 2A), whereas this relation was weaker afterwards ($R^2 = 0.06$, $p = 1e-10$). VeDBA during Morning was also positively correlated to $T_{WaterSurface}$ before the egg-laying date ($R^2 = 0.35$, $p < 2e-16$), but the relationship was weak for the rest of the season ($R^2 = 0.087$, $p = 5e-16$). Hourly VeDBA was clearly influenced by air temperature through a non-linear pattern: maximal hourly VeDBA increased with air temperature until around 25°C but then decreased at higher air temperatures.

Identification of nesting events

Nocturnal field patrolling (from 6pm to 11 pm from 15 May to 5 July, 2017) permitted to observe all but one (Turtle#5) of the eight turtles crawling on the mount for nesting. During digging nest, before a turtle deposits its eggs, the angles extracted from the static component of acceleration showed a very specific pattern, associated with regular, repetitive leg-movements (Fig 1D). This acceleration signal was sufficiently stereotypical to allow detection of nest digging by a computer algorithm (see Methods). Our customised algorithm detected all nesting observed in the field, but also digging that did not led to successful oviposition (nesting attempts), plus three additional nesting events and attempts for the Turtle#5 that had not been directly observed nesting in the field. All acceleration-derived nest digging and nesting events occurred between 29 May and 25 June, 2017, during the Evening. Only Turtle#5 that was not observed during nocturnal patrols nested during the Morning. On average, nest digging lasted 73 ± 38 min and was associated with a mean VeDBA of $0.31 \pm 0.06 \text{ m.s}^{-2}$ (Table 1). As a comparison, mean VeDBA computed over the entire dataset was $0.16 \pm 0.12 \text{ m.s}^{-2}$, i.e. half that observed during nest digging. Accordingly, nesting (walking, nest digging, laying eggs, nest covering) appears as a highly energy-consuming activity.

Discussion

This study shows that 3-axis accelerometry associated with simple temperature, pressure, light sensors provide unrevealed fine-scale behaviours and time-budget in free living freshwater

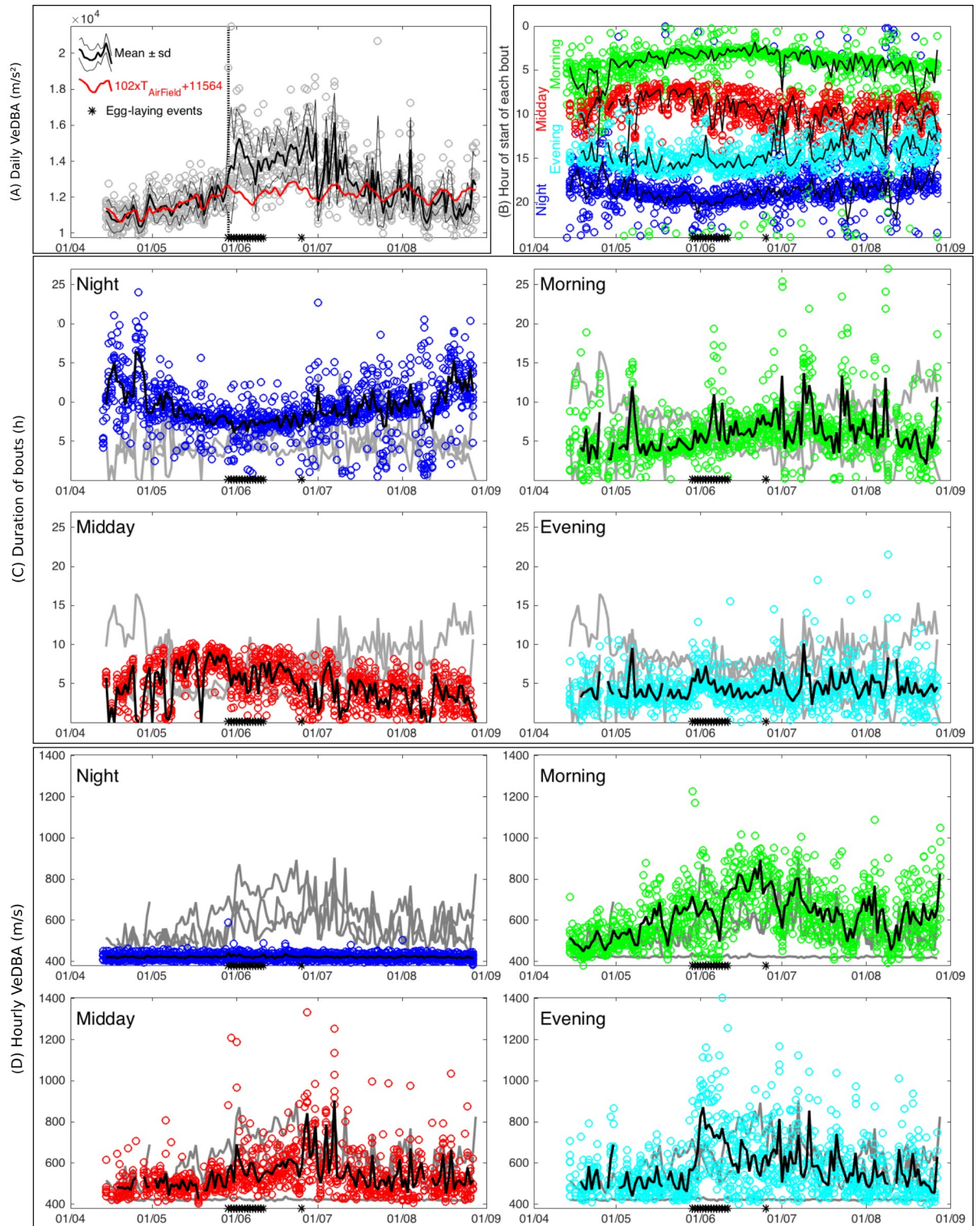


Fig 2. Time-budget of 8 adult females European pond turtle *Emys orbicularis* at Petite Camargue Alsacienne, Alsace, France from 14 April to 29 August, 2017. For each day and each individual, the sum of VeDBA computed over 24h is represented with a single circle. On all graphs, black asterisks on the x-axis represent egg-laying events detected by accelerometry signal. (A) Thick and thin lines are respectively the daily mean \pm standard deviation computed for all 8 individuals. The red line is a linear transformation of air temperature recorded on the field (TAirField). Parameters were estimated by plotting TAirField against daily VeDBA over the period preceding egg-laying date. Note that

this linear transformation fits well with mean VeDBA over this period (left from the vertical dotted line), but not after egg-laying date. (B) Hours of start and end of each daily bout, with means shown as solid lines. Hours of start of Morning, Midday, Evening and Night bouts are respectively in green, red, cyan and blue. (C) Duration of each bout, with black solid line for the daily mean. (D) Hourly VeDBA for each bout, with black solid line for the daily mean. At the far-right bottom graph, note the huge increase in hourly VeDBA during the evening bout when egg-laying occurred.

<https://doi.org/10.1371/journal.pone.0256549.g002>

turtles throughout the nesting season. We show that in Alsace, NE of France, adult females behave according to four distinguishable phases over the circadian cycle, referred as Night, Morning, Midday, and Evening. Each of the four phases were associated with particular behaviours and activity levels. Additionally, the high resolution and high frequency data collected with these devices permitted to assess breathing events, timing of nesting events and energetic proxies (VeDBA) derived from acceleration. Importantly, we show that the nesting events appear to be a turning point in terms of individual behaviour, energy expenditure, and environmental drivers: before nesting occurs, the daily activity is highly related to ambient temperature, whereas it shows more stochastic patterns and changes afterward (Fig 2A and 2D).

Automatic detection of daily patterns

The algorithm we developed to identify daily patterns has proven a powerful, fast and customizable tool. First, it allowed to work on extensive datasets (one 3-axis accelerometer operating at 10Hz over 140 days provides 130 million lines of [Time,X,Y,Z], i.e. ~4.5 GB of data), without subjectivity in pattern cutting. Second, despite automatic detection based on threshold values that may introduce biases (e.g. a point just above a threshold value is automatically removed whereas a visual/manual treatment may have led to take it into account), visual inspection of 12 randomly chosen days revealed that the algorithm is highly robust and consistent in terms of number of events.

Foraging occurs in the morning

In the morning, turtles experienced temperatures (T_{WACU}) closest to $T_{WaterSurface}$ (Fig 1A), indicating that turtles mostly remained close to the surface, as confirmed by direct field observations. The subsurface layer has been proposed as the preferred environment for foraging in pond turtles [32, 33]. However, actual behaviour of WACU-equipped individuals monitored in our study was hard to deduce from recorded data only. There was neither an informative signal in the temperature records, nor a clear pattern in pressure and angle data. Yet, the pressure signal was very erratic, suggesting that turtles repeatedly banged into obstacles with the logger attached to the carapace. Such erratic pressure signal constrained us to use water temperature as a proxy of the water depth where turtles actually behaved. We suggest that erratic pressure signals could be associated with motivated intrusions of turtles in reeds where they may actively seek for food. Putative foraging during Morning is supported by high VeDBA but most importantly by the significant effect of ambient temperature between 4am and 10am on daily VeDBA: the warmest the water, the most active turtles were foraging. Previous studies reported feeding mostly occurs in morning in other Emydidae [34]. At the opposite, it is very unlikely that feeding occurs during Night because VeDBA was minimal at that time of the day and light limited for turtles visually foraging. In short, it is most likely that feeding occurred early in the day, before basking, with the latter facilitating digestion during warmer periods in the middle of the day. In the future, underwater or animal-borne cameras should be used to test our hypothesis that Morning is the most prone phase of the day for foraging in pond turtles.

Nesting is a nightly energy-consuming activity

25 of the 26 detected nesting events and attempts occurred between May 29 and June 11, 2017, and all but two occurred during the Evening. These nesting dates and their timing are in line with the literature for France where 76% ($n = 21$) of *Emys* turtles nest after sunset, with the remaining nesting in the morning [24]. *Emys* turtles have been reported to nest between the end of May and the end of June in France [35] and in Turkey [36], and throughout June in Italy [37]. Interestingly, one of our eight individuals (ID#5, Table 1) laid two successive clutches 22 days apart. Double (and even triple) clutches have been reported in *Emys orbicularis* [19] but is thought to be quite rare in France [35]. Temperature but also sunshine duration have been reported to be important factors influencing nesting: in Slovakia first nesting attempts occur after a 13-day period when temperature is 17.7°C [38]. We found similar values, with mean T_{AirField} being 18.6°C during the same 13-day period.

Our results show that in our captive facility where the nesting mount was only a few meters from the pond, nesting events and attempts are highly energy-consuming activities, about twice more expensive in terms of VeDBA than any other activity recorded in the present study (Table 1). Importantly, all eight studied individuals made 3.25 ± 1.75 attempts before they successfully laid eggs (eventually laying twice, as reported for ID#5), increasing by three times the actual energy and time devoted to nesting. In natural conditions where *Emys* turtles can travel 150 to 1000 m to their nesting ground [39], actual energetic expenses are most likely to be even more extended. Deployment of accelerometers on free ranging turtles are required to estimate such costs in the wild.

In addition, nesting appears as a turning point in the season. Before it occurs, turtles are mainly active in the morning (Fig 2D), probably foraging. The level of activity is then closely linked to the ambient temperature (Fig 2A). During the nesting period, daily activity doubles (Fig 2A), due to the intense nest digging activity happening in the evening (Fig 2D). After then, turtles are more active during the evening and the midday time (Fig 2D), and activity is no more linearly linked to ambient temperature (Fig 2A).

Temperature has a dual effect on the level of activity

We noticed an interesting non-linear effect of ambient temperature on the hourly activity level (VeDBA), with a turning point around 25°C. VeDBA having a Gamma-like distribution, it is convenient to focus on maximal VeDBA values: for temperatures between 7 and 25°C, maximal VeDBA increased with temperature experienced by the turtles, whereas maximal VeDBA decreased when temperature exceeded 25°C (until the maximal air temperature recorded in the study, i.e. 47°C). These results suggest that for temperatures lower than 25°C, European pond turtle activity is positively related to temperature. Above this temperature threshold, which typically occurs during the early afternoon, individuals are most likely to bask or rest, leading to lower activity: the warmer the air, the more turtles lay immobile emerged. Turtles were least active during the Night. However, we did not detect any bimodal activity patterns during daytime (as described in [40]).

Air temperature and sunlight have been previously reported to drive basking behaviour in freshwater turtles [24, 41]. Our study showed that in Alsace, NE France, cloud coverage rather than temperature most strongly affected the basking behaviour of turtles during Midday. For instance, a cloud coverage > 90% dramatically reduced the number of basking events, if they occurred at all. We propose that when the sun is not visible, individuals rather stay submerged, since basking would be ineffective, unnecessarily elevating potential predation risks. Recording the level of solar radiation experienced by the turtles directly might even better explain observed basking behaviour, as clouds are not uniformly obstructing the sun.

Conclusion

Accelerometers deployed on gravid *Emys* turtles permit to assess fine scale behaviour, time budget and energetic expenditure, and most interestingly to quantify nesting events, which are likely underestimated in the field, because they mostly occur during the night. The nesting period appears to be the most intense activity in terms of energy expenditure that needs to be estimated in natural conditions. Nesting also happens as a turning point for seasonal activity patterns: before nesting, daily activity is mainly due to foraging-like, temperature-driven activity in the Morning, whereas after nesting, individual activity is more complex. In the near future, video-assisted monitoring of turtle behaviour and calibration of actual energy expenditure with accelerometry-derived VeDBA, coupled with spatial telemetry should permit the extension of time budgets to quantitative energy budgets.

Our study may have some limitations, mainly due to the fact that all individuals inhabited one single, relatively small pond, where all individuals encountered the same environmental constraints. One may, thus, stress that each individual's behaviour may have impacted that of the rest of the group. For instance, some turtles (*Pseudemys nelsoni*) have been reported to present social learning by observing conspecifics [42]. In the future, social structure should be investigated for assessing such potential inter-individual interactions.

Acknowledgments

The study was part of the research project EMYS@lsace led by JYG who initially conducted field procedures, algorithms writing and data analyses. Fieldwork was additionally run by ASLG. Algorithms and data analyses were completed by TM. Special thanks to Yann Tremblay for initial advices in mastering Matlab, Nancy Rebout for statistical analyses and Manfred Enstipp for correcting the first drafts. Thanks to Philippe Kniebly, Bapstiste Doenlen, Valentin Amrhein and Lilla Lovazc (Petite Camargue Alsacienne) for their logistical support in the field.

Author Contributions

Conceptualization: Jean-Yves Georges.

Data curation: Théo Marchand, Jean-Yves Georges.

Formal analysis: Théo Marchand, Jean-Yves Georges.

Funding acquisition: Jean-Yves Georges.

Investigation: Anne-Sophie Le Gal, Jean-Yves Georges.

Methodology: Jean-Yves Georges.

Project administration: Jean-Yves Georges.

Resources: Jean-Yves Georges.

Software: Théo Marchand, Jean-Yves Georges.

Supervision: Jean-Yves Georges.

Validation: Théo Marchand, Jean-Yves Georges.

Visualization: Théo Marchand, Jean-Yves Georges.

Writing – original draft: Théo Marchand.

Writing – review & editing: Théo Marchand, Jean-Yves Georges.

References

1. Sih A, Ferrari MCO, Harris DJ. Evolution and behavioural responses to human-induced rapid environmental change. *Evol Appl*. 2011; 4(2): 367–387. <https://doi.org/10.1111/j.1752-4571.2010.00166.x> PMID: 25567979
2. Huey RB, Losos JB, Moritz C. Are lizards toast? *Science*. 2010; 328(5980): 832–833. <https://doi.org/10.1126/science.1190374> PMID: 20466909
3. Sentis A, Ramon-Portugal F, Brodeur J, Hemptinne JL. The smell of change: warming affects species interactions mediated by chemical information. *Glob Change Biol*. 2015; 21(10): 3586–3594. <https://doi.org/10.1111/gcb.12932> PMID: 25820469
4. van Baaren J, Candolin U. Plasticity in a changing world: behavioural responses to human perturbations. *Curr Opin Insect Sci*. 2018; 27: 21–25. <https://doi.org/10.1016/j.cois.2018.02.003> PMID: 30025630
5. Claireaux G, Webber D, Kerr S, Boutilier R. Physiology and behaviour of free-swimming Atlantic cod (*Gadus morhua*) facing fluctuating temperature conditions. *J Exp Biol*. 1995; 198(Pt 1): 49–60. PMID: 9317317
6. Capula M, Luiselli L, Bombi P, D'Amico M. Climate change threatens the survival of highly endangered Sardinian populations of the snake Hemorrhoids hippocrepis. *Anim Biol*. 2011; 61(3): 239–248. <https://doi.org/10.1163/157075511X584191>
7. Jara M, García-Roa R, Escobar LE, Torres-Carvajal O, Pincheira-Donoso D. Alternative reproductive adaptations predict asymmetric responses to climate change in lizards. *Sci Rep*. 2019; 9:5093. <https://doi.org/10.1038/s41598-019-41670-8> PMID: 30911069
8. Brown DD, Kays R, Wikelski M, Wilson R, Klimley AP. Observing the unwatchable through acceleration logging of animal behavior. *Animal Biotelemetry* 2013; 1: 20. <https://doi.org/10.1186/2050-3385-1-20>
9. Shepard E, Wilson R, Quintana F, Gómez Laich A, Liebsch N, Albareda D, et al. Identification of animal movement patterns using tri-axial accelerometry. *Endanger Species Res*. 2008; 10: 47–60. <https://doi.org/10.3354/esr00084>
10. Enstipp MR, Ballorain K, Ciccione S, Narazaki T, Sato K, Georges JY. Energy expenditure of adult green turtles (*Chelonia mydas*) at their foraging grounds and during simulated oceanic migration. *Funct Ecol*. 2016; 30(11): 1810–1825. <https://doi.org/10.1111/1365-2435.12667>
11. Green JA, Halsey LG, Wilson RP, Frappell PB. Estimating energy expenditure of animals using the accelerometry technique: activity, inactivity and comparison with the heart-rate technique. *J Exp Biol*. 2009; 212(4): 471–482. <https://doi.org/10.1242/jeb.026377> PMID: 19181894
12. Halsey LG, Shepard ELC, Wilson RP. Assessing the development and application of the accelerometry technique for estimating energy expenditure. *Comp Bioch Physiol. Part A: Mol Integr Physiol*. 2011; 158(3): 305–314. <https://doi.org/10.1016/j.cbpa.2010.09.002> PMID: 20837157
13. Rowe JW. Egg size and shape variation within and among Nebraskan painted turtle (*Chrysemys picta bellii*) populations: relationships to clutch and maternal body size. *Copeia*. 1994; 4: 1034–1040. <https://doi.org/10.2307/1446729>
14. Kennett R. Reproduction of two species of freshwater turtle, *Chelodina rugosa* and *Elseya dentata*, from the wet-dry tropics of northern Australia. *J Zool Lond*. 1999; 247: 457–473.
15. Wilkinson LK, Gibbons JW. Patterns of reproductive allocation: Clutch and egg size variation in three freshwater turtles. *Copeia*. 2005; 4:868–879.
16. Plot V, Jenkins T, Robin JP, Fossette S, Georges JY. Leatherback turtles are capital breeders: Morphometric and physiological evidence from longitudinal monitoring. *Physiol Bioch Zool*. 2013; 86(4): 385–397. <https://doi.org/10.1086/671127> PMID: 23799833
17. Spinks PQ, Shaffer HB. Conflicting mitochondrial and nuclear phylogenies for the widely disjunct *Emys* (Testudines: Emydidae) species complex, and what they tell us about biogeography and hybridization. *Syst Biol*. 2009; 58(1): 1–20. <https://doi.org/10.1093/sysbio/syp005> PMID: 20525565
18. Joos J, Kirchner M, Vamberger M, Kaviani M, Rahimibashar MR, Fritz U, et al. Climate and patterns of body size variation in the European pond turtle, *Emys orbicularis*. *Biol J Linnean Soc*. 2017; 122: 351–365.
19. Zuffi MAL, Odetti F. Double egg deposition in the European pond turtle, *Emys orbicularis*, from central Italy. *Ital J Zool*. 1998; 65(2): 187–189. <https://doi.org/10.1080/11250009809386745>
20. Cadi A, Joly P. Competition for basking places between the endangered European pond turtle (*Emys orbicularis galloitalica*) and the introduced red-eared slider (*Trachemys scripta elegans*). *Can J Zool*. 2003; 81(8): 1392–1398. <https://doi.org/10.1139/Z03-108>
21. Lebboroni M, Cecchini A. Basking counts as abundance indices in pond populations of *Emys orbicularis*. *Herp J*. 2005; 15: 121–124.

22. Vignoli L, Bologna MA, Manzini S, Rugiero L, Luiselli L. Attributes of basking sites of the European pond turtle (*Emys orbicularis*) in central Italy. *Amphibia-Reptilia* 2015; 36(2): 125–131. <https://doi.org/10.1163/15685381-00002988>
23. Lebboroni M, Chelazzi G. Activity patterns of *Emys orbicularis* L. (*Chelonia Emydidae*) in central Italy. *Etho Ecol Evol.* 1991; 3(3): 257–268.
24. Cadi A, Nemoz M, Thienpont S, Joly P. Home range, movements, and habitat use of the European pond turtle (*Emys orbicularis*) in the Rhone-Alpes region, France. *Biologia.* 2004; 59: 89–94.
25. Philippot V, Georges JY. Reintroducing a forgotten species on a territory neglected by the public: the case of the European pond turtle in Alsace, NE of France. *Nature Sciences & Société* (unpublished data).
26. Quintard B, Georges JY. Veterinary management of European pond turtle reintroductions. Miller—Fowler's Zoo and Wild Animal Medicine Current Therapy 2021; Vol. 10, Chapter 75: Forthcoming.
27. Bates D, Maechler M, Bolker B, Walker S. Fitting linear mixed-effects models using lme4. *J Stat Soft.* 2015; 7(1): <https://doi.org/10.18637/jss.v067.i01>
28. Pinheiro J, Bates D, DebRoy S, Sarkar D and R Core Team. nlme: Linear and nonlinear mixed effects models 2016; available from: <http://CRAN.R-project.org/package=nlme>
29. Crawley MJ. *The R Book.* John Wiley & Sons. 2007.
30. Zuur A, Ieno EN, Smith GM. *Analyzing ecological data.* 2007; available from www.springer.com/gb/book/9780387459677.
31. Zuur A, Ieno EN, Walker N, Saveliev AA, Smith GM. *Mixed effects models and extensions in ecology with R.* 2009; available from www.springer.com/gb/book/9780387874579.
32. Ficetola GF, De Bernardi F. Is the European “pond” turtle *Emys orbicularis* strictly aquatic and carnivorous? *Amphibia-Reptilia.* 2006; 27: 445–447. <https://doi.org/10.1163/156853806778190079>
33. Kummer S, Heiss E, Singer K, Leinell P, Natchev N. Feeding behaviour and feeding motorics in sub-adult European pond turtles, *Emys orbicularis* (Linnaeus, 1758). *Acta Zool Bulg.* 2017; Suppl. 10: 77–84.
34. Rowe J, Moll E. A Radiotelemetric study of activity and movements of the Blanding's turtle (*Emydoidea blandingi*) in Northeastern Illinois. *J Herpetol.* (1991); 25(2), 178–185. <https://doi.org/10.2307/1564646>
35. Servan J, Roy JJ. Notes on the reproduction of *Emys orbicularis* in Brenne (Central France). *Biologia.* 2004; 59: 139–142.
36. Ayaz D, Cicek K, Bayrakci Y, Tok CV. Reproductive ecology of the European pond turtle, *Emys orbicularis* (Linnaeus, 1758), from Mediterranean Turkey. *Acta Zool Bulg.* 2017; Suppl. 10: 23–29.
37. Rovero F, Chelazzi G. Nesting migrations in a population of the European pond turtle *Emys orbicularis* (L.) (*Chelonia Emydidae*) from central Italy. *Ethol Ecol Evol.* 1996; 8(3): 297–304. <https://doi.org/10.1080/08927014.1996.9522920>
38. Horvath E, Havas P, Danko S, Bona M, Novotny M, Buresova A, et al. The Effect of two weather parameters on the timing of nesting in a critically endangered population of the European pond turtle, *Emys orbicularis* (L., 1758). *Acta Zool Bulg.* 2017; Suppl. 10: 57–63.
39. Meeske M. Nesting behaviour of European pond turtle (*Emys orbicularis*) in South Lithuania. *Acta Zool Lith.* 1997; 7(1): 143–150. <https://doi.org/10.1080/13921657.1997.10541430>
40. Dall'Antonia L, Lebboroni M, Benvenuti S, Chelazzi G. Data loggers to monitor activity in wild freshwater turtles. *Etho Ecol Evol.* 2001; 13(1): 81–88. <https://doi.org/10.1080/08927014.2001.9522789>
41. Bury R. Population ecology of freshwater turtles. In: Harless M, Morlock H, editors. *Turtles: Perspectives and research*, John Wiley & Sons, New York and Chichester; 1979. pp. 571–602.
42. Davis KM, Burghardt GM. Turtles (*Pseudemys nelsoni*) learn about visual cues indicating food from experienced turtles. *J Comp Psychol.* 2011; 125(4): 404–410. <https://doi.org/10.1037/a0024784> PMID: 21842979